

# NDUFB8 Recombinant Matched Antibody Pair, PBS Only

Catalog Number: **MP00204-2**

## Capture Antibody Information

Catalog Number:  
83216-6-PBS  
Host:  
Rabbit  
Isotype:  
IgG  
Purification Method:  
Protein A purification

Clone ID:  
230510G8  
Reactivity:  
human  
GenBank:  
BC000466  
Immunogen Catalog Number:  
Ag6495

Conjugate:  
Unconjugated  
Full name:  
NADH dehydrogenase (ubiquinone) 1  
beta subcomplex, 8, 19kDa  
Gene ID:  
4714

## Detection Antibody Information

Catalog Number:  
83216-1-PBS  
Host:  
Rabbit  
Isotype:  
IgG  
Purification Method:  
Protein A purification

Clone ID:  
230510E10  
Reactivity:  
human  
GenBank:  
BC000466  
Immunogen Catalog Number:  
Ag6495

Conjugate:  
Unconjugated  
Full name:  
NADH dehydrogenase (ubiquinone) 1  
beta subcomplex, 8, 19kDa  
Gene ID:  
4714

## Applications

Tested Applications:  
Sandwich ELISA

Range:  
3.13-200 ng/mL (Sandwich ELISA)

Recommended Dilutions:  
It is recommended that this reagent  
should be titrated in each testing  
system to obtain optimal results.

## Product Information

MP00204-2 targets NDUFB8 in immunoassays as a matched antibody pair. Validated in Sandwich ELISA.

Capture antibody: NDUFB8 Recombinant antibody, PBS Only (Capture) 83216-6-PBS (230510G8). 100 µg. Concentration 1 mg/mL.

Detection antibody: NDUFB8 Recombinant antibody, PBS Only (Capture/Detector) 83216-1-PBS (230510E10). 100 µg. Concentration 1 mg/mL.

Unconjugated rabbit recombinant monoclonal antibody pair in PBS only storage buffer at a concentration of 1 mg/mL, ready for conjugation. Created using Proteintech's proprietary in-house recombinant technology. Recombinant production enables unrivalled batch-to-batch consistency, easy scale-up, and future security of supply.

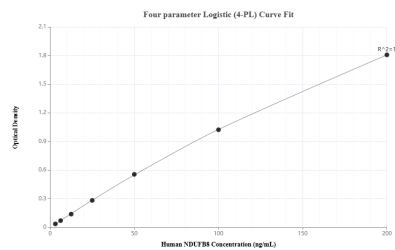
Matched antibody pairs are designed for use in a variety of assays and platforms that require matched antibody pairs.

Antibody use should be optimized for each application and assay.

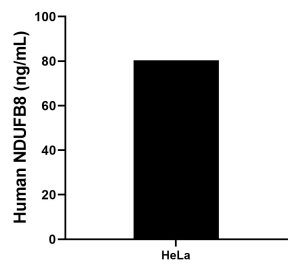
## Storage

Storage:  
Store at -80°C.  
The product is shipped with ice packs. Upon receipt, store it immediately at -80°C  
Storage buffer:  
PBS only

## Selected Validation Data



Sandwich ELISA standard curve of MP00204-2, Human NDUFB8 Recombinant Matched Antibody Pair - PBS only. 83216-6-PBS was coated to a plate as the capture antibody and incubated with serial dilutions of standard Ag6495. 83216-1-PBS was HRP conjugated as the detection antibody. Range: 3.13-200 ng/mL.



The mean NDUFB8 concentration was determined to be 80.40 ng/mL in HeLa cell extract based on a 1.5 mg/mL extract load.