

APCDD1 Recombinant Matched Antibody Pair, PBS Only

Catalog Number: **MP00199-4**

Capture Antibody Information

Catalog Number:
83246-1-PBS
Host:
Rabbit
Isotype:
IgG
Purification Method:
Protein A purification

Clone ID:
240085A5
Reactivity:
human
GenBank:
BC053324
Immunogen Catalog Number:
Ag10303

Conjugate:
Unconjugated
Full name:
adenomatosis polyposis coli down-regulated 1
Gene ID:
147495

Detection Antibody Information

Catalog Number:
83246-2-PBS
Host:
Rabbit
Isotype:
IgG
Purification Method:
Protein A purification

Clone ID:
240085D8
Reactivity:
human
GenBank:
BC053324
Immunogen Catalog Number:
Ag10303

Conjugate:
Unconjugated
Full name:
adenomatosis polyposis coli down-regulated 1
Gene ID:
147495

Applications

Tested Applications:
Sandwich ELISA

Range:
0.781-50 ng/mL (Sandwich ELISA)

Recommended Dilutions:
It is recommended that this reagent should be titrated in each testing system to obtain optimal results.

Product Information

MP00199-4 targets APCDD1 in immunoassays as a matched antibody pair. Validated in Sandwich ELISA.

Capture antibody: APCDD1 Recombinant antibody, PBS Only (Capture/Detector) 83246-1-PBS (240085A5). 100 µg. Concentration 1 mg/mL.

Detection antibody: APCDD1 Recombinant antibody, PBS Only (Capture/Detector) 83246-2-PBS (240085D8). 100 µg. Concentration 1 mg/mL.

Unconjugated rabbit recombinant monoclonal antibody pair in PBS only storage buffer at a concentration of 1 mg/mL, ready for conjugation. Created using Proteintech's proprietary in-house recombinant technology. Recombinant production enables unrivalled batch-to-batch consistency, easy scale-up, and future security of supply.

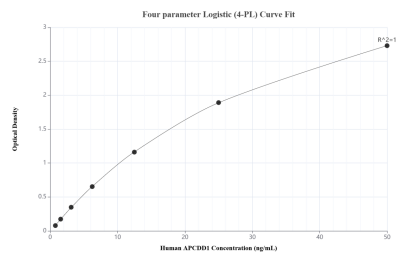
Matched antibody pairs are designed for use in a variety of assays and platforms that require matched antibody pairs.

Antibody use should be optimized for each application and assay.

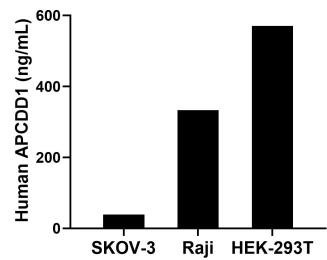
Storage

Storage:
Store at -80°C.
The product is shipped with ice packs. Upon receipt, store it immediately at -80°C
Storage buffer:
PBS only

Selected Validation Data



Sandwich ELISA standard curve of MP00199-4, Human APCDD1 Recombinant Matched Antibody Pair - PBS only. 83246-1-PBS was coated to a plate as the capture antibody and incubated with serial dilutions of standard Ag10303. 83246-2-PBS was HRP conjugated as the detection antibody. Range: 0.781-50 ng/mL



The mean APCDD1 concentration was determined to be 39.03 ng/mL in SKOV-3 cell extract based on a 4.20 mg/mL extract load, 333.27 ng/mL in Raji cell extract based on a 3.00 mg/mL extract load and 570.52 ng/mL in HEK-293T cell extract based on a 2.60 mg/mL extract load.