

# USP8 Recombinant Matched Antibody Pair, PBS Only

Catalog Number: MP00188-1

## Capture Antibody Information

<b>Catalog Number:</b> 83172-2-PBS	<b>Clone ID:</b> 240016D3	<b>Conjugate:</b> Unconjugated
<b>Host:</b> Rabbit	<b>Reactivity:</b> human	<b>Full name:</b> ubiquitin specific peptidase 8
<b>Isotype:</b> IgG	<b>GenBank:</b> BC110590	<b>Gene ID:</b> 9101
<b>Purification Method:</b> Protein A purification	<b>Immunogen Catalog Number:</b> Ag27143	

## Detection Antibody Information

<b>Catalog Number:</b> 83172-1-PBS	<b>Clone ID:</b> 240016A3	<b>Conjugate:</b> Unconjugated
<b>Host:</b> Rabbit	<b>Reactivity:</b> human	<b>Full name:</b> ubiquitin specific peptidase 8
<b>Isotype:</b> IgG	<b>GenBank:</b> BC110590	<b>Gene ID:</b> 9101
<b>Purification Method:</b> Protein A purification	<b>Immunogen Catalog Number:</b> Ag27143	

## Applications

<b>Tested Applications:</b> Cytometric bead array, Sandwich ELISA	<b>Range:</b> 1.25-20 ng/mL (Cytometric Bead Array) 0.625-40 ng/mL (Sandwich ELISA)	<b>Recommended Dilutions:</b> It is recommended that this reagent should be titrated in each testing system to obtain optimal results.
--	---	---

## Product Information

MP00188-1 targets USP8 in immunoassays as a matched antibody pair. Validated in Cytometric bead array, Sandwich ELISA.

Capture antibody: USP8 Recombinant antibody, PBS Only (Capture) 83172-2-PBS (240016D3). 100 µg. Concentration 1 mg/mL.

Detection antibody: USP8 Recombinant antibody, PBS Only (Detector) 83172-1-PBS (240016A3). 100 µg. Concentration 1 mg/mL.

Alternative USP8 matched antibody pairs: MP00188-2

Unconjugated rabbit recombinant monoclonal antibody pair in PBS only storage buffer at a concentration of 1 mg/mL, ready for conjugation. Created using Proteintech's proprietary in-house recombinant technology. Recombinant production enables unrivalled batch-to-batch consistency, easy scale-up, and future security of supply.

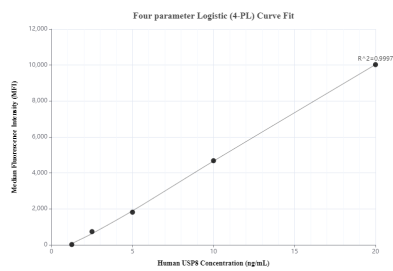
Matched antibody pairs are designed for use in a variety of assays and platforms that require matched antibody pairs.

Antibody use should be optimized for each application and assay.

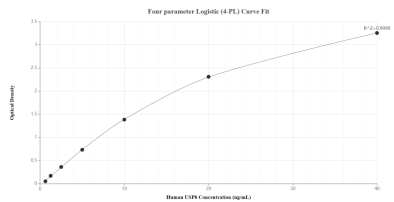
## Storage

**Storage:**  
Store at -80°C.  
The product is shipped with ice packs. Upon receipt, store it immediately at -80°C  
**Storage buffer:**  
PBS only

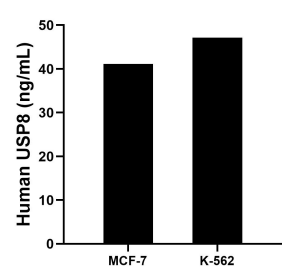
## Selected Validation Data



Cytometric bead array standard curve of MP00188-1, USP8 Recombinant Matched Antibody Pair, PBS Only. Capture antibody: 83172-2-PBS. Detection antibody: 83172-1-PBS. Standard: Ag27143. Range: 1.25-20 ng/mL.



Sandwich ELISA standard curve of MP00188-1, Human USP8 Recombinant Matched Antibody Pair - PBS only. 83172-2-PBS was coated to a plate as the capture antibody and incubated with serial dilutions of standard Ag27143. 83172-1-PBS was HRP conjugated as the detection antibody. Range: 0.625-40 ng/mL.



The mean USP8 concentration was determined to be 41.15 ng/mL in MCF-7 cell extract based on a 4.30 mg/mL extract load and 47.12 ng/mL in K-562 cell extract based on a 4.50 mg/mL extract load.