

CPD Recombinant Matched Antibody Pair, PBS Only

Catalog Number: MP00185-1

Capture Antibody Information

Catalog Number: 83229-3-PBS	Clone ID: 240196G11	Conjugate: Unconjugated
Host: Rabbit	Reactivity: human	Full name: carboxypeptidase D
Isotype: IgG	GenBank: NM_001304	Gene ID: 1362
Purification Method: Protein A purification	Immunogen Catalog Number: Ag34646	

Detection Antibody Information

Catalog Number: 83229-1-PBS	Clone ID: 240196A3	Conjugate: Unconjugated
Host: Rabbit	Reactivity: human	Full name: carboxypeptidase D
Isotype: IgG	GenBank: NM_001304	Gene ID: 1362
Purification Method: Protein A purification	Immunogen Catalog Number: Ag34646	

Applications

Tested Applications: Cytometric bead array, Sandwich ELISA	Range: 0.625-20 ng/mL (Cytometric Bead Array) 0.625-40 ng/mL (Sandwich ELISA)	Recommended Dilutions: It is recommended that this reagent should be titrated in each testing system to obtain optimal results.
--	--	---

Product Information

MP00185-1 targets CPD in immunoassays as a matched antibody pair. Validated in Cytometric bead array, Sandwich ELISA.

Capture antibody: CPD Recombinant antibody, PBS Only (Capture/Detector) 83229-3-PBS (240196G11). 100 µg. Concentration 1 mg/mL.

Detection antibody: CPD Recombinant antibody, PBS Only (Detector) 83229-1-PBS (240196A3). 100 µg. Concentration 1 mg/mL.

Alternative CPD matched antibody pairs: MP00185-2

Unconjugated rabbit recombinant monoclonal antibody pair in PBS only storage buffer at a concentration of 1 mg/mL, ready for conjugation. Created using Proteintech's proprietary in-house recombinant technology. Recombinant production enables unrivalled batch-to-batch consistency, easy scale-up, and future security of supply.

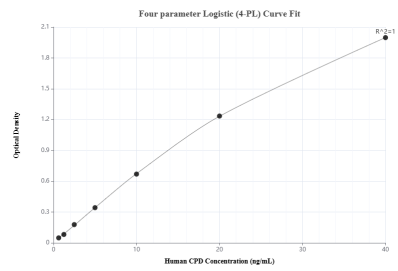
Matched antibody pairs are designed for use in a variety of assays and platforms that require matched antibody pairs.

Antibody use should be optimized for each application and assay.

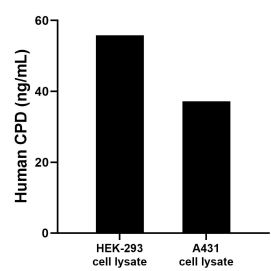
Storage

Storage:
Store at -80°C.
The product is shipped with ice packs. Upon receipt, store it immediately at -80°C
Storage buffer:
PBS only

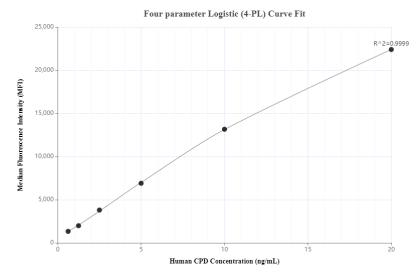
Selected Validation Data



Sandwich ELISA standard curve of MP00185-1, Human CPD Recombinant Matched Antibody Pair - PBS only. 83229-3-PBS was coated to a plate as the capture antibody and incubated with serial dilutions of standard Ag34646. 83229-1-PBS was HRP conjugated as the detection antibody. Range: 0.625-40 ng/mL



HEK-293 and A431 cell lysate were measured. The human CPD concentration of detected samples was determined to be 55.8 ng/mL (based on a 1.2 mg/mL extract load) in HEK-293 cell lysate and 37.2 ng/mL (based on a 1.5 mg/mL extract load) in A431 cell lysate.



Cytometric bead array standard curve of MP00185-1, CPD Recombinant Matched Antibody Pair, PBS Only. Capture antibody: 83229-3-PBS. Detection antibody: 83229-1-PBS. Standard: Ag34646. Range: 0.625-20 ng/mL