

STX1A Recombinant Matched Antibody Pair, PBS Only

Catalog Number: **MP00172-4**

Capture Antibody Information

Catalog Number:

83159-1-PBS

Host:

Rabbit

Isotype:

IgG

Purification Method:

Protein A purification

Clone ID:

240018A2

Reactivity:

human

GenBank:

NM_004603

Conjugate:

Unconjugated

Full name:

syntaxin 1A (brain)

Gene ID:

6804

Detection Antibody Information

Catalog Number:

83159-3-PBS

Host:

Rabbit

Isotype:

IgG

Purification Method:

Protein A purification

Clone ID:

240018D9

Reactivity:

human

GenBank:

NM_004603

Conjugate:

Unconjugated

Full name:

syntaxin 1A (brain)

Gene ID:

6804

Applications

Tested Applications:

Sandwich ELISA

Range:

7.8-500 pg/mL (Sandwich ELISA)

Recommended Dilutions:

It is recommended that this reagent should be titrated in each testing system to obtain optimal results.

Product Information

MP00172-4 targets STX1A in immunoassays as a matched antibody pair. Validated in Sandwich ELISA.

Capture antibody: STX1A Recombinant antibody, PBS Only (Capture/Detector) 83159-1-PBS (240018A2). 100 µg. Concentration 1 mg/mL.

Detection antibody: STX1A Recombinant antibody, PBS Only (Capture/Detector) 83159-3-PBS (240018D9). 100 µg. Concentration 1 mg/mL.

Unconjugated rabbit recombinant monoclonal antibody pair in PBS only storage buffer at a concentration of 1 mg/mL, ready for conjugation. Created using Proteintech's proprietary in-house recombinant technology. Recombinant production enables unrivalled batch-to-batch consistency, easy scale-up, and future security of supply.

Matched antibody pairs are designed for use in a variety of assays and platforms that require matched antibody pairs.

Antibody use should be optimized for each application and assay.

Storage

Storage:

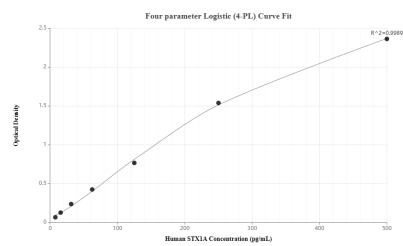
Store at -80°C.

The product is shipped with ice packs. Upon receipt, store it immediately at -80°C

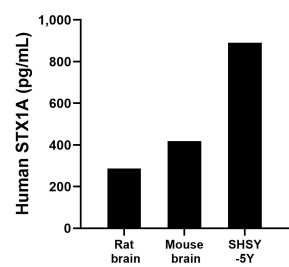
Storage buffer:

PBS only

Selected Validation Data



Sandwich ELISA standard curve of MP00172-4, Human STX1A Monoclonal Matched Antibody Pair - PBS only. 83159-1-PBS was coated to a plate as the capture antibody and incubated with serial dilutions of standard SY01214. 83159-3-PBS was HRP conjugated as the detection antibody. Range: 7.8-500 pg/mL.



The mean human STX1A concentration was determined to be 287.3 pg/mL in rat brain extract based on a 3 mg/mL extract load, 418.7 pg/mL in mouse brain extract based on a 2 mg/mL extract load and 890.3 pg/mL in SHSY-5Y cell extract based on a 3 mg/mL extract load.