

KLF5 Recombinant Matched Antibody Pair, PBS Only

Catalog Number: **MP00155-2**

Capture Antibody Information

Catalog Number: 83205-1-PBS	Clone ID: 230509C4	Conjugate: Unconjugated
Host: Rabbit	Reactivity: human	Full name: Kruppel-like factor 5 (intestinal)
Isotype: IgG	GenBank: BC042131	Gene ID: 688
Purification Method: Protein A purification	Immunogen Catalog Number: Ag15267	

Detection Antibody Information

Catalog Number: 83205-2-PBS	Clone ID: 230509C5	Conjugate: Unconjugated
Host: Rabbit	Reactivity: human	Full name: Kruppel-like factor 5 (intestinal)
Isotype: IgG	GenBank: BC042131	Gene ID: 688
Purification Method: Protein A purification	Immunogen Catalog Number: Ag15267	

Applications

Tested Applications: Cytometric bead array, Sandwich ELISA	Range: 1.25-20 ng/mL (Cytometric Bead Array) 78.1-5000 pg/mL (Sandwich ELISA)	Recommended Dilutions: It is recommended that this reagent should be titrated in each testing system to obtain optimal results.
--	--	---

Product Information

MP00155-2 targets KLF5 in immunoassays as a matched antibody pair. Validated in Cytometric bead array, Sandwich ELISA.

Capture antibody: KLF5 Recombinant antibody, PBS Only (Capture/Detector) 83205-1-PBS (230509C4). 100 µg. Concentration 1 mg/mL.

Detection antibody: KLF5 Recombinant antibody, PBS Only (Detector) 83205-2-PBS (230509C5). 100 µg. Concentration 1 mg/mL.

Alternative KLF5 matched antibody pairs: MP00155-1

Unconjugated rabbit recombinant monoclonal antibody pair in PBS only storage buffer at a concentration of 1 mg/mL, ready for conjugation. Created using Proteintech's proprietary in-house recombinant technology. Recombinant production enables unrivalled batch-to-batch consistency, easy scale-up, and future security of supply.

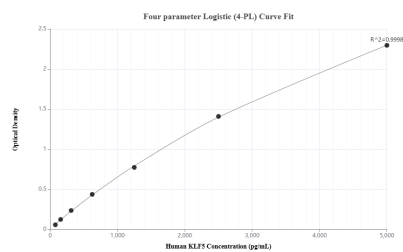
Matched antibody pairs are designed for use in a variety of assays and platforms that require matched antibody pairs.

Antibody use should be optimized for each application and assay.

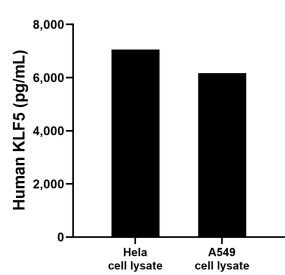
Storage

Storage:
Store at -80°C.
The product is shipped with ice packs. Upon receipt, store it immediately at -80°C
Storage buffer:
PBS only

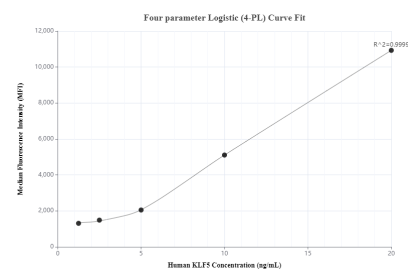
Selected Validation Data



Sandwich ELISA standard curve of MP00155-2, Human KLF5 Recombinant Matched Antibody Pair - PBS only. 83205-1-PBS was coated to a plate as the capture antibody and incubated with serial dilutions of standard Ag15267. 83205-2-PBS was HRP conjugated as the detection antibody. Range: 78.1-5000 pg/mL



HeLa and A549 cell lysates were measured. The human KLF5 concentration of detected samples was determined to be 7,055.7 pg/mL (based on a 3.2 mg/mL extract load) in HeLa cell lysate and 6,173.2 pg/mL (based on a 2.2 mg/mL extract load) in A549 cell lysate.



Cytometric bead array standard curve of MP00155-2, KLF5 Recombinant Matched Antibody Pair, PBS Only. Capture antibody: 83205-1-PBS. Detection antibody: 83205-2-PBS. Standard: Ag15267. Range: 1.25-20 ng/mL