

PAPD5 Recombinant Matched Antibody Pair, PBS Only

Catalog Number: **MP00145-1**

Capture Antibody Information

Catalog Number:

83098-2-PBS

Host:

Rabbit

Isotype:

IgG

Purification Method:

Protein A purification

Clone ID:

230368B12

Reactivity:

Human

GenBank:

NM_001040285

Conjugate:

Unconjugated

Full name:

PAP associated domain containing 5

Gene ID:

64282

Detection Antibody Information

Catalog Number:

83098-4-PBS

Host:

Rabbit

Isotype:

IgG

Purification Method:

Protein A purification

Clone ID:

230368D8

Reactivity:

Human

GenBank:

NM_001040285

Conjugate:

Unconjugated

Full name:

PAP associated domain containing 5

Gene ID:

64282

Applications

Tested Applications:

Cytometric bead array

Range:

0.313-10 ng/mL (Cytometric Bead Array)

Recommended Dilutions:

It is recommended that this reagent should be titrated in each testing system to obtain optimal results.

Product Information

MP00145-1 targets PAPD5 in immunoassays as a matched antibody pair. Validated in Cytometric bead array.

Capture antibody: PAPD5 Recombinant antibody, PBS Only (Capture) 83098-2-PBS (230368B12). 100 µg. Concentration 1 mg/mL.

Detection antibody: PAPD5 Recombinant antibody, PBS Only (Detector) 83098-4-PBS (230368D8). 100 µg. Concentration 1 mg/mL.

Alternative PAPD5 matched antibody pairs: MP00145-2

Unconjugated rabbit recombinant monoclonal antibody pair in PBS only (BSA and azide free) storage buffer at a concentration of 1 mg/mL, ready for conjugation. Created using Proteintech's proprietary in-house recombinant technology. Recombinant production enables unrivalled batch-to-batch consistency, easy scale-up, and future security of supply.

Matched antibody pairs are designed for use in a variety of assays and platforms that require matched antibody pairs.

Antibody use should be optimized for each application and assay.

Storage

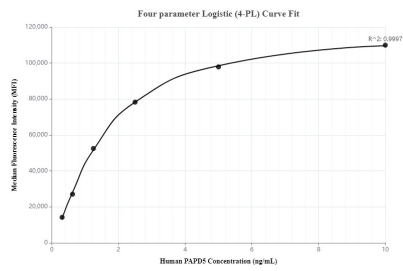
Storage:

Store at -80°C.

Storage buffer:

PBS only

Selected Validation Data



Cytometric bead array standard curve ofMP00145-1, PAPD5 Recombinant Matched Antibody Pair, PBS Only. Capture antibody: 83098-2-PBS. Detection antibody: 83098-4-PBS. Standard: SY01262. Range: 0.313-10 ng/mL