

SALL4 Recombinant Matched Antibody Pair, PBS Only

Catalog Number: MP00137-1

Capture Antibody Information

Catalog Number: 83039-2-PBS	Clone ID: 230284D4	Conjugate: Unconjugated
Host: Rabbit	Reactivity: Human	Full name: sal-like 4 (Drosophila)
Isotype: IgG	GenBank: BC111714	Gene ID: 57167
Purification Method: Protein A purification	Immunogen Catalog Number: Ag16076	

Detection Antibody Information

Catalog Number: 83039-1-PBS	Clone ID: 230284B7	Conjugate: Unconjugated
Host: Rabbit	Reactivity: Human	Full name: sal-like 4 (Drosophila)
Isotype: IgG	GenBank: BC111714	Gene ID: 57167
Purification Method: Protein A purification	Immunogen Catalog Number: Ag16076	

Applications

Tested Applications: Sandwich ELISA	Range: 0.156-10 ng/mL (Sandwich ELISA)	Recommended Dilutions: It is recommended that this reagent should be titrated in each testing system to obtain optimal results.
--	---	--

Product Information

MP00137-1 targets SALL4 in immunoassays as a matched antibody pair. Validated in Sandwich ELISA.

Capture antibody: SALL4 Recombinant antibody, PBS Only (Capture) 83039-2-PBS (230284D4). 100 µg. Concentration 1 mg/mL.

Detection antibody: SALL4 Recombinant antibody, PBS Only (Detector) 83039-1-PBS (230284B7). 100 µg. Concentration 1 mg/mL.

Alternative SALL4 matched antibody pairs: MP00137-2

Unconjugated rabbit recombinant monoclonal antibody pair in PBS only (BSA and azide free) storage buffer at a concentration of 1 mg/mL, ready for conjugation. Created using Proteintech's proprietary in-house recombinant technology. Recombinant production enables unrivalled batch-to-batch consistency, easy scale-up, and future security of supply.

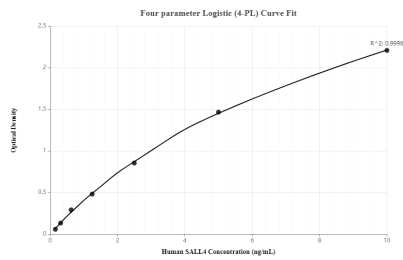
Matched antibody pairs are designed for use in a variety of assays and platforms that require matched antibody pairs.

Antibody use should be optimized for each application and assay.

Storage

Storage:
Store at -80°C.
Storage buffer:
PBS only

Selected Validation Data



Sandwich ELISA standard curve ofMP00137-1, SALL4 Recombinant Matched Antibody Pair, PBS Only. Capture antibody: 83039-2-PBS. Detection antibody: 83039-1-PBS. Standard: Ag16076. Range: 0.156-10 ng/mL