

# CD28 Recombinant Matched Antibody Pair, PBS Only

Catalog Number: MP00136-5

## Capture Antibody Information

Catalog Number:  
83383-8-PBS  
Host:  
Rabbit  
Isotype:  
IgG  
Purification Method:  
Protein A purification

Clone ID:  
240353H8  
Reactivity:  
human  
GenBank:  
BC093698

Conjugate:  
Unconjugated  
Full name:  
CD28 molecule  
Gene ID:  
940

## Detection Antibody Information

Catalog Number:  
83383-2-PBS  
Host:  
Rabbit  
Isotype:  
IgG  
Purification Method:  
Protein A purification

Clone ID:  
240353H7  
Reactivity:  
human  
GenBank:  
BC093698

Conjugate:  
Unconjugated  
Full name:  
CD28 molecule  
Gene ID:  
940

## Applications

Tested Applications:  
Sandwich ELISA

Range:  
78.125-5000 pg/mL (Sandwich ELISA)

Recommended Dilutions:  
It is recommended that this reagent should be titrated in each testing system to obtain optimal results.

## Product Information

MP00136-5 targets CD28 in immunoassays as a matched antibody pair. Validated in Sandwich ELISA.

Capture antibody: CD28 Recombinant antibody, PBS Only (Capture) 83383-8-PBS (240353H8). 100 µg. Concentration 1 mg/mL.

Detection antibody: CD28 Recombinant antibody, PBS Only (Detector) 83383-2-PBS (240353H7). 100 µg. Concentration 1 mg/mL.

Alternative CD28 matched antibody pairs: MP00136-1, MP00136-2, MP00136-3, MP00136-4, MP50331-1, MP50331-2

Unconjugated rabbit recombinant monoclonal antibody pair in PBS only storage buffer at a concentration of 1 mg/mL, ready for conjugation. Created using Proteintech's proprietary in-house recombinant technology. Recombinant production enables unrivalled batch-to-batch consistency, easy scale-up, and future security of supply.

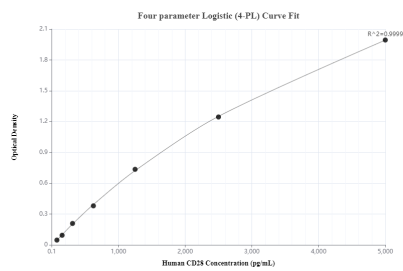
Matched antibody pairs are designed for use in a variety of assays and platforms that require matched antibody pairs.

Antibody use should be optimized for each application and assay.

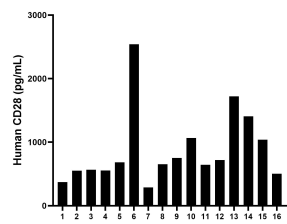
## Storage

Storage:  
Store at -80°C.  
The product is shipped with ice packs. Upon receipt, store it immediately at -80°C  
Storage buffer:  
PBS only

## Selected Validation Data



Sandwich ELISA standard curve of MP00136-5, Human CD28 Monoclonal Matched Antibody Pair - PBS only. 83383-8-PBS was coated to a plate as the capture antibody and incubated with serial dilutions of standard Eg0889. 83383-2-PBS was HRP conjugated as the detection antibody. Range: 78.125-5000 pg/mL.



Serum of sixteen individual healthy human donors were measured. The human CD28 concentration of detected samples was determined to be 879.1 pg/mL with a range of 287.8 - 2,540.7 pg/mL.