

COL15A1 Recombinant Matched Antibody Pair, PBS Only

Catalog Number: **MP00133-4**

Capture Antibody Information

Catalog Number: 83031-3-PBS	Clone ID: 230248F4	Conjugate: Unconjugated
Host: Rabbit	Reactivity: human	Full name: collagen, type XV, alpha 1
Isotype: IgG	GenBank: BC157094	Gene ID: 1306
Purification Method: Protein A purification	Immunogen Catalog Number: Ag34644	

Detection Antibody Information

Catalog Number: 83031-1-PBS	Clone ID: 230248A11	Conjugate: Unconjugated
Host: Rabbit	Reactivity: human	Full name: collagen, type XV, alpha 1
Isotype: IgG	GenBank: BC157094	Gene ID: 1306
Purification Method: Protein A purification	Immunogen Catalog Number: Ag34644	

Applications

Tested Applications: Sandwich ELISA	Range: 0.188-12 ng/mL (Sandwich ELISA)	Recommended Dilutions: It is recommended that this reagent should be titrated in each testing system to obtain optimal results.
---	--	---

Product Information

MP00133-4 targets COL15A1 in immunoassays as a matched antibody pair. Validated in Sandwich ELISA.

Capture antibody: Collagen Type XV Recombinant antibody, PBS Only (Capture/Detector) 83031-3-PBS (230248F4). 100 µg. Concentration 1 mg/mL.

Detection antibody: Collagen Type XV Recombinant antibody, PBS Only (Capture/Detector) 83031-1-PBS (230248A11). 100 µg. Concentration 1 mg/mL.

Unconjugated rabbit recombinant monoclonal antibody pair in PBS only storage buffer at a concentration of 1 mg/mL, ready for conjugation. Created using Proteintech's proprietary in-house recombinant technology. Recombinant production enables unrivalled batch-to-batch consistency, easy scale-up, and future security of supply.

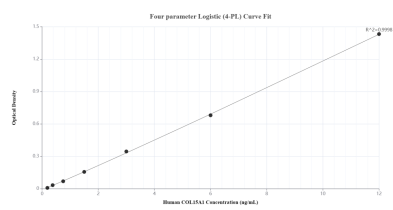
Matched antibody pairs are designed for use in a variety of assays and platforms that require matched antibody pairs.

Antibody use should be optimized for each application and assay.

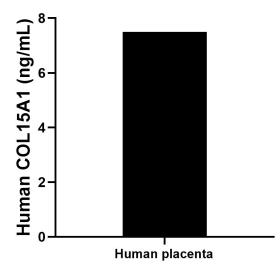
Storage

Storage:
Store at -80°C.
The product is shipped with ice packs. Upon receipt, store it immediately at -80°C
Storage buffer:
PBS only

Selected Validation Data



Sandwich ELISA standard curve of MP00133-4, Human COL15A1 Recombinant Matched Antibody Pair - PBS only. 83031-3-PBS was coated to a plate as the capture antibody and incubated with serial dilutions of standard Ag34644. 83031-1-PBS was HRP conjugated as the detection antibody. Range: 0.188-12 ng/mL.



The mean COL15A1 concentration was determined to be 7.50 ng/mL in human placenta extract based on a 2.40 mg/mL extract load.