

SCN3B Recombinant Matched Antibody Pair, PBS Only

Catalog Number: **MP00132-4**

Capture Antibody Information

Catalog Number: 82959-2-PBS	Clone ID: 230316A4	Conjugate: Unconjugated
Host: Rabbit	Reactivity: human	Full name: sodium channel, voltage-gated, type III, beta
Isotype: IgG	GenBank: BC126265	Gene ID: 55800
Purification Method: Protein A purification	Immunogen Catalog Number: Ag23201	

Detection Antibody Information

Catalog Number: 82959-8-PBS	Clone ID: 230316B7	Conjugate: Unconjugated
Host: Rabbit	Reactivity: human	Full name: sodium channel, voltage-gated, type III, beta
Isotype: IgG	GenBank: BC126265	Gene ID: 55800
Purification Method: Protein A purification	Immunogen Catalog Number: Ag23201	

Applications

Tested Applications: Sandwich ELISA	Range: 0.156-10 ng/mL (Sandwich ELISA)	Recommended Dilutions: It is recommended that this reagent should be titrated in each testing system to obtain optimal results.
---	--	---

Product Information

MP00132-4 targets SCN3B in immunoassays as a matched antibody pair. Validated in Sandwich ELISA.

Capture antibody: SCN3B Recombinant antibody, PBS Only (Capture) 82959-2-PBS (230316A4). 100 µg. Concentration 1 mg/mL.

Detection antibody: SCN3B Recombinant antibody, PBS Only (Detector) 82959-8-PBS (230316B7). 100 µg. Concentration 1 mg/mL.

Unconjugated rabbit recombinant monoclonal antibody pair in PBS only storage buffer at a concentration of 1 mg/mL, ready for conjugation. Created using Proteintech's proprietary in-house recombinant technology. Recombinant production enables unrivalled batch-to-batch consistency, easy scale-up, and future security of supply.

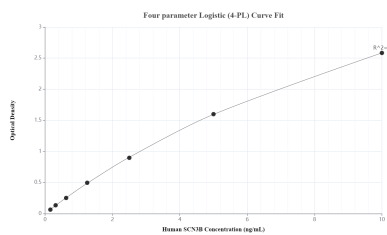
Matched antibody pairs are designed for use in a variety of assays and platforms that require matched antibody pairs.

Antibody use should be optimized for each application and assay.

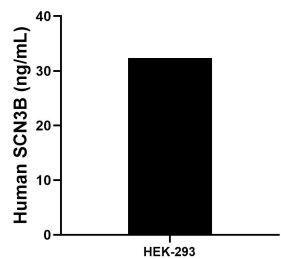
Storage

Storage:
Store at -80°C.
The product is shipped with ice packs. Upon receipt, store it immediately at -80°C
Storage buffer:
PBS only

Selected Validation Data



Sandwich ELISA standard curve of MP00132-4, Human SCN3B Recombinant Matched Antibody Pair - PBS only. 82959-2-PBS was coated to a plate as the capture antibody and incubated with serial dilutions of standard Ag23201. 82959-8-PBS was HRP conjugated as the detection antibody. Range: 0.156-10 ng/mL



The mean SCN3B concentration was determined to be 32.36 ng/mL in HEK-293 cell extract based on a 3.40 mg/mL extract load.