

MAX Recombinant Matched Antibody Pair, PBS Only

Catalog Number: MP00126-3

Capture Antibody Information

Catalog Number: 82958-5-PBS	Clone ID: 230215G4	Conjugate: Unconjugated
Host: Rabbit	Reactivity: human	Full name: MYC associated factor X
Isotype: IgG	GenBank: BC003525	Gene ID: 4149
Purification Method: Protein A purification	Immunogen Catalog Number: Ag0680	

Detection Antibody Information

Catalog Number: 82958-3-PBS	Clone ID: 230215C6	Conjugate: Unconjugated
Host: Rabbit	Reactivity: human	Full name: MYC associated factor X
Isotype: IgG	GenBank: BC003525	Gene ID: 4149
Purification Method: Protein A purification	Immunogen Catalog Number: Ag0680	Affinity: $K_D = 2.32 \times 10^{-10}$ $K_{off} = 8.10 \times 10^{-5}$ $K_{on} = 3.49 \times 10^5$

Applications

Tested Applications: Cytometric bead array, Sandwich ELISA	Range: 0.625–20 ng/mL (Cytometric Bead Array) 0.195–12.5 ng/mL (Sandwich ELISA)	Recommended Dilutions: It is recommended that this reagent should be titrated in each testing system to obtain optimal results.
--	--	---

Product Information

MP00126-3 targets MAX in immunoassays as a matched antibody pair. Validated in Cytometric bead array, Sandwich ELISA.

Capture antibody: MAX Recombinant antibody, PBS Only (Capture) 82958-5-PBS (230215G4). 100 µg. Concentration 1 mg/mL.

Detection antibody: MAX Recombinant antibody, PBS Only (Detector) 82958-3-PBS (230215C6). 100 µg. Concentration 1 mg/mL.

Alternative MAX matched antibody pairs: MP00126-1, MP00126-2

Unconjugated rabbit recombinant monoclonal antibody pair in PBS only storage buffer at a concentration of 1 mg/mL, ready for conjugation. Created using Proteintech's proprietary in-house recombinant technology. Recombinant production enables unrivalled batch-to-batch consistency, easy scale-up, and future security of supply.

Matched antibody pairs are designed for use in a variety of assays and platforms that require matched antibody pairs.

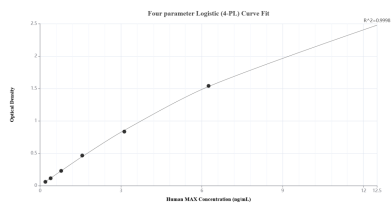
Antibody use should be optimized for each application and assay.

Storage

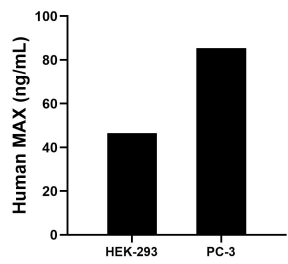
Storage:
Store at -80°C.
The product is shipped with ice packs. Upon receipt, store it immediately at -80°C

Storage buffer:
PBS only

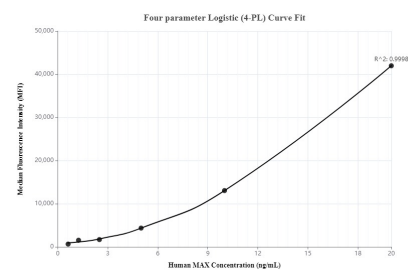
Selected Validation Data



Sandwich ELISA standard curve of MP00126-3, Human MAX Recombinant Matched Antibody Pair - PBS only. 82958-5-PBS was coated to a plate as the capture antibody and incubated with serial dilutions of standard Ag0680. 82958-3-PBS was HRP conjugated as the detection antibody. Range: 0.195-12.5 ng/mL.



The mean MAX concentration was determined to be 46.56 ng/mL in HEK-293 cell extract based on a 1.50 mg/mL extract load and 85.43 ng/mL in PC-3 cell extract based on a 1.30 mg/mL extract load.



Cytometric bead array standard curve of MP00126-3, MAX Recombinant Matched Antibody Pair - PBS only. Capture antibody: 82958-5-PBS. Detection antibody: 82958-3-PBS. Standard: Ag0680. Range: 0.625-20 ng/mL.