

Claudin 18 Recombinant Matched Antibody Pair, PBS Only

Catalog Number: MP00105-3

Capture Antibody Information

Catalog Number:
83028-4-PBS
Host:
Rabbit
Isotype:
IgG
Purification Method:
Protein A purification

Clone ID:
230198F8
Reactivity:
human
GenBank:
NM_001002026
Immunogen Catalog Number:
Ag34049

Conjugate:
Unconjugated
Full name:
claudin 18
Gene ID:
51208

Detection Antibody Information

Catalog Number:
83028-5-PBS
Host:
Rabbit
Isotype:
IgG
Purification Method:
Protein A purification

Clone ID:
230198H1
Reactivity:
human
GenBank:
NM_001002026
Immunogen Catalog Number:
Ag34049

Conjugate:
Unconjugated
Full name:
claudin 18
Gene ID:
51208

Applications

Tested Applications:
Sandwich ELISA

Range:
93.8-6000 pg/mL (Sandwich ELISA)

Recommended Dilutions:
It is recommended that this reagent should be titrated in each testing system to obtain optimal results.

Product Information

MP00105-3 targets Claudin 18 in immunoassays as a matched antibody pair. Validated in Sandwich ELISA.

Capture antibody: CLDN18 Recombinant antibody, PBS Only (Capture) 83028-4-PBS (230198F8). 100 µg. Concentration 1 mg/mL.

Detection antibody: CLDN18 Recombinant antibody, PBS Only (Detector) 83028-5-PBS (230198H1). 100 µg. Concentration 1 mg/mL.

Unconjugated rabbit recombinant monoclonal antibody pair in PBS only storage buffer at a concentration of 1 mg/mL, ready for conjugation. Created using Proteintech's proprietary in-house recombinant technology. Recombinant production enables unrivalled batch-to-batch consistency, easy scale-up, and future security of supply.

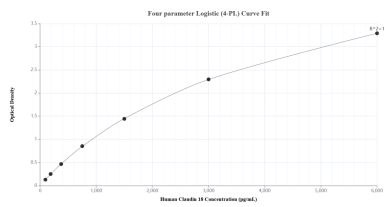
Matched antibody pairs are designed for use in a variety of assays and platforms that require matched antibody pairs.

Antibody use should be optimized for each application and assay.

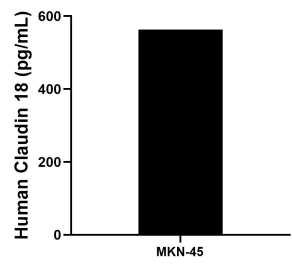
Storage

Storage:
Store at -80°C.
The product is shipped with ice packs. Upon receipt, store it immediately at -80°C
Storage buffer:
PBS only

Selected Validation Data



Sandwich ELISA standard curve of MP00105-3, Human Claudin 18 Recombinant Matched Antibody Pair - PBS only. 83028-4-PBS was coated to a plate as the capture antibody and incubated with serial dilutions of standard Ag34049. 83028-5-PBS was HRP conjugated as the detection antibody. Range: 93.8-6000 pg/mL.



The mean Claudin 18 concentration was determined to be 563.0 pg/mL in MKN-45 cell extract based on a 4.8 mg/mL extract load.