

FDFT1 Recombinant Matched Antibody Pair, PBS Only

Catalog Number: MP00097-1

Capture Antibody Information

Catalog Number: 83020-2-PBS	Clone ID: 230362F3	Conjugate: Unconjugated
Host: Rabbit	Reactivity: human	Full name: farnesyl-diphosphate farnesyltransferase 1
Isotype: IgG	GenBank: BC029641	Gene ID: 2222
Purification Method: Protein A purification	Immunogen Catalog Number: Ag3743	

Detection Antibody Information

Catalog Number: 83020-4-PBS	Clone ID: 230362F12	Conjugate: Unconjugated
Host: Rabbit	Reactivity: human	Full name: farnesyl-diphosphate farnesyltransferase 1
Isotype: IgG	GenBank: BC029641	Gene ID: 2222
Purification Method: Protein A purification	Immunogen Catalog Number: Ag3743	

Applications

Tested Applications: Cytometric bead array, Sandwich ELISA	Range: 0.625-20 ng/mL (Cytometric Bead Array) 0.313-20 ng/mL (Sandwich ELISA)	Recommended Dilutions: It is recommended that this reagent should be titrated in each testing system to obtain optimal results.
--	--	---

Product Information

MP00097-1 targets FDFT1 in immunoassays as a matched antibody pair. Validated in Cytometric bead array, Sandwich ELISA.

Capture antibody: FDFT1 Recombinant antibody, PBS Only (Capture/Detector) 83020-2-PBS (230362F3). 100 µg. Concentration 1 mg/mL.

Detection antibody: FDFT1 Recombinant antibody, PBS Only (Detector) 83020-4-PBS (230362F12). 100 µg. Concentration 1 mg/mL.

Alternative FDFT1 matched antibody pairs: MP00097-2, MP00097-3

Unconjugated rabbit recombinant monoclonal antibody pair in PBS only storage buffer at a concentration of 1 mg/mL, ready for conjugation. Created using Proteintech's proprietary in-house recombinant technology. Recombinant production enables unrivalled batch-to-batch consistency, easy scale-up, and future security of supply.

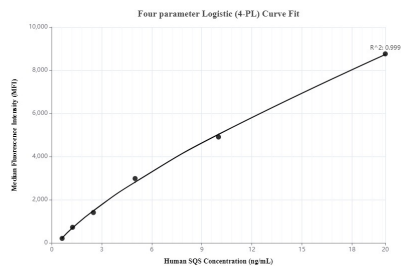
Matched antibody pairs are designed for use in a variety of assays and platforms that require matched antibody pairs.

Antibody use should be optimized for each application and assay.

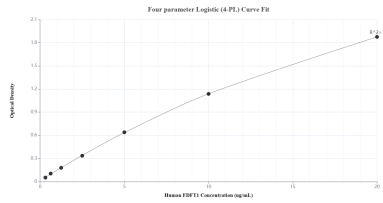
Storage

Storage:
Store at -80°C.
The product is shipped with ice packs. Upon receipt, store it immediately at -80°C
Storage buffer:
PBS only

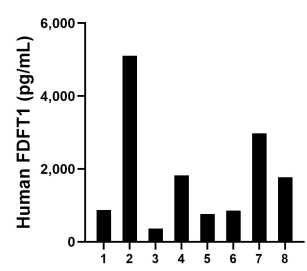
Selected Validation Data



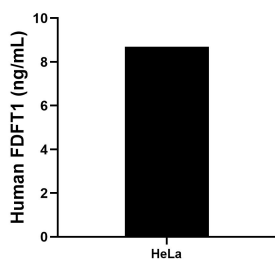
Cytometric bead array standard curve of MP00097-1, SQS/FDFT1 Recombinant Matched Antibody Pair, PBS Only. Capture antibody: 83020-2-PBS. Detection antibody: 83020-4-PBS. Standard: Ag3743. Range: 0.625-20 ng/mL



Sandwich ELISA standard curve of MP00097-1, Human FDFT1 Recombinant Matched Antibody Pair - PBS only. 83020-2-PBS was coated to a plate as the capture antibody and incubated with serial dilutions of standard Ag3743. 83020-4-PBS was HRP conjugated as the detection antibody. Range: 0.313-20 ng/mL



Serum of eight individual healthy human donors was measured. The FDFT1 concentration of detected samples was determined to be 1,817 pg/mL with a range of 368 - 5,103 pg/mL



The mean FDFT1 concentration was determined to be 8.7 ng/mL in HeLa cell extract based on a 1.5 mg/mL extract load.