

G3BP2 Recombinant Matched Antibody Pair, PBS Only

Catalog Number: MP00090-3

Capture Antibody Information

Catalog Number:
82080-4-PBS
Host:
Rabbit
Isotype:
IgG
Purification Method:
Protein A purification

Clone ID:
230275D6
Reactivity:
human
GenBank:
BC011731
Immunogen Catalog Number:
Ag9355

Conjugate:
Unconjugated
Full name:
GTPase activating protein (SH3 domain) binding protein 2
Gene ID:
9908

Detection Antibody Information

Catalog Number:
82080-2-PBS
Host:
Rabbit
Isotype:
IgG
Purification Method:
Protein A purification

Clone ID:
230275B2
Reactivity:
human
GenBank:
BC011731
Immunogen Catalog Number:
Ag9355

Conjugate:
Unconjugated
Full name:
GTPase activating protein (SH3 domain) binding protein 2
Gene ID:
9908

Applications

Tested Applications:
Cytometric bead array, Sandwich ELISA

Range:
0.625-20 ng/mL (Cytometric Bead Array)
0.625-40 ng/mL (Sandwich ELISA)

Recommended Dilutions:
It is recommended that this reagent should be titrated in each testing system to obtain optimal results.

Product Information

MP00090-3 targets G3BP2 in immunoassays as a matched antibody pair. Validated in Cytometric bead array, Sandwich ELISA.

Capture antibody: G3BP2 Recombinant antibody, PBS Only (Capture) 82080-4-PBS (230275D6). 100 µg. Concentration 1 mg/mL.

Detection antibody: G3BP2 Recombinant antibody, PBS Only (Detector) 82080-2-PBS (230275B2). 100 µg. Concentration 1 mg/mL.

Alternative G3BP2 matched antibody pairs: MP00090-1, MP00090-2

Unconjugated rabbit recombinant monoclonal antibody pair in PBS only storage buffer at a concentration of 1 mg/mL, ready for conjugation. Created using Proteintech's proprietary in-house recombinant technology. Recombinant production enables unrivalled batch-to-batch consistency, easy scale-up, and future security of supply.

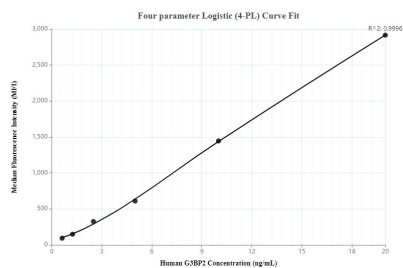
Matched antibody pairs are designed for use in a variety of assays and platforms that require matched antibody pairs.

Antibody use should be optimized for each application and assay.

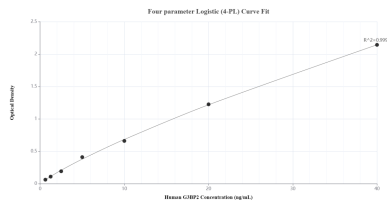
Storage

Storage:
Store at -80°C.
The product is shipped with ice packs. Upon receipt, store it immediately at -80°C
Storage buffer:
PBS only

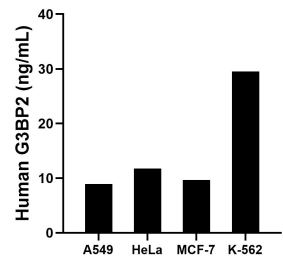
Selected Validation Data



Cytometric bead array standard curve of MP00090-3, G3BP2 Recombinant Matched Antibody Pair, PBS Only. Capture antibody: 82080-4-PBS. Detection antibody: 82080-2-PBS. Standard: Ag9355. Range: 0.625-20 ng/mL



Sandwich ELISA standard curve of MP00090-3, Human G3BP2 Recombinant Matched Antibody Pair - PBS only. 82080-4-PBS was coated to a plate as the capture antibody and incubated with serial dilutions of standard Ag9355. 82080-2-PBS was HRP conjugated as the detection antibody. Range: 0.625-40 ng/mL



The mean G3BP2 concentration was determined to be 8.91 ng/mL in A549 cell extract based on a 2.20 mg/mL extract load, 11.75 ng/mL in HeLa cell extract based on a 3.20 mg/mL extract load, 9.66 ng/mL in MCF-7 cell extract based on a 4.30 mg/mL extract load and 29.51 ng/mL in K-562 cell extract based on a 4.50 mg/mL extract load.