

# MMP3 Recombinant Matched Antibody Pair, PBS Only

Catalog Number:MP00083-2

## Capture Antibody Information

**Catalog Number:**  
82984-3-PBS  
**Host:**  
Rabbit  
**Isotype:**  
IgG  
**Purification Method:**  
Protein A purification

**Clone ID:**  
230535E1  
**Reactivity:**  
human  
**GenBank:**  
BC074815

**Conjugate:**  
Unconjugated  
**Full name:**  
matrix metalloproteinase 3  
(stromelysin 1, progelatinase)  
**Gene ID:**  
4314

## Detection Antibody Information

**Catalog Number:**  
82984-2-PBS  
**Host:**  
Rabbit  
**Isotype:**  
IgG  
**Purification Method:**  
Protein A purification

**Clone ID:**  
230535B6  
**Reactivity:**  
human  
**GenBank:**  
BC074815

**Conjugate:**  
Unconjugated  
**Full name:**  
matrix metalloproteinase 3  
(stromelysin 1, progelatinase)  
**Gene ID:**  
4314

## Applications

**Tested Applications:**  
Cytometric bead array, Sandwich ELISA

**Range:**  
0.625-20 ng/mL (Cytometric Bead Array)  
0.156-10 ng/mL (Sandwich ELISA)

**Recommended Dilutions:**  
It is recommended that this reagent should be titrated in each testing system to obtain optimal results.

## Product Information

MP00083-2 targets MMP3 in immunoassays as a matched antibody pair. Validated in Cytometric bead array, Sandwich ELISA.

Capture antibody: MMP3 Recombinant antibody, PBS Only (Capture) 82984-3-PBS (230535E1). 100 µg. Concentration 1 mg/mL.

Detection antibody: MMP3 Recombinant antibody, PBS Only (Detector) 82984-2-PBS (230535B6). 100 µg. Concentration 1 mg/mL.

Alternative MMP3 matched antibody pairs: MP00083-1, MP00083-3, MP50277-1, MP50277-2

Unconjugated rabbit recombinant monoclonal antibody pair in PBS only storage buffer at a concentration of 1 mg/mL, ready for conjugation. Created using Proteintech's proprietary in-house recombinant technology. Recombinant production enables unrivalled batch-to-batch consistency, easy scale-up, and future security of supply.

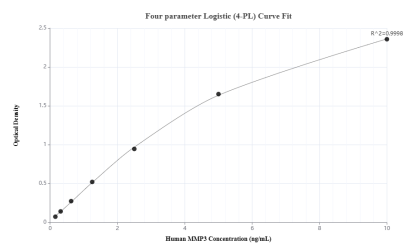
Matched antibody pairs are designed for use in a variety of assays and platforms that require matched antibody pairs.

Antibody use should be optimized for each application and assay.

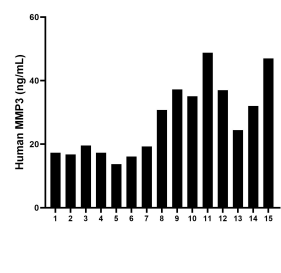
## Storage

**Storage:**  
Store at -80°C.  
**The product is shipped with ice packs. Upon receipt, store it immediately at -80°C**  
**Storage buffer:**  
PBS only

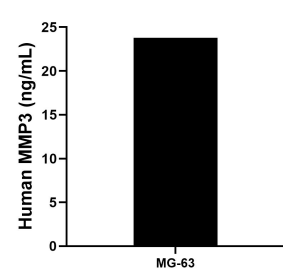
## Selected Validation Data



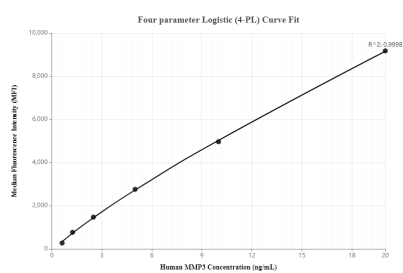
Sandwich ELISA standard curve of MP00083-2, Human MMP3 Recombinant Matched Antibody Pair - PBS only. 82984-3-PBS was coated to a plate as the capture antibody and incubated with serial dilutions of standard:Eg0382.82984-2-PBS was HRP conjugated as the detection antibody. Range: 0.156-10 ng/mL.



Serum of fifteen individual healthy human donors was measured. The human MMP3 concentration of detected samples was determined to be 27.50 ng/mL with a range of 13.74 - 48.76 ng/mL.



MG-63 were cultured in DMEM supplemented with 10% fetal bovine serum, 2.5 mM L-glutamine, 100 U/mL penicillin, and 100  $\mu$ g/mL streptomycin sulfate. An aliquot of the cell culture supernate was removed, assayed for human MMP3, and measured 23.78 ng/mL.



Cytometric bead array standard curve ofMP00083-2, MMP3 Recombinant Matched Antibody Pair, PBS Only. Capture antibody: 82984-3-PBS. Detection antibody: 82984-2-PBS. Standard: Eg0382. Range: 0.625-20 ng/mL.