

# MELK Recombinant Matched Antibody Pair, PBS Only

Catalog Number: MP00075-4

## Capture Antibody Information

Catalog Number:  
82893-2-PBS  
Host:  
Rabbit  
Isotype:  
IgG  
Purification Method:  
Protein A purification

Clone ID:  
230106A4  
Reactivity:  
human, mouse  
GenBank:  
BC014039  
Immunogen Catalog Number:  
Ag1897

Conjugate:  
Unconjugated  
Full name:  
maternal embryonic leucine zipper kinase  
Gene ID:  
9833

## Detection Antibody Information

Catalog Number:  
82893-6-PBS  
Host:  
Rabbit  
Isotype:  
IgG  
Purification Method:  
Protein A purification

Clone ID:  
230106E8  
Reactivity:  
human  
GenBank:  
BC014039  
Immunogen Catalog Number:  
Ag1897

Conjugate:  
Unconjugated  
Full name:  
maternal embryonic leucine zipper kinase  
Gene ID:  
9833

## Applications

Tested Applications:  
Sandwich ELISA

Range:  
0.313-20 ng/mL (Sandwich ELISA)

Recommended Dilutions:  
It is recommended that this reagent should be titrated in each testing system to obtain optimal results.

## Product Information

MP00075-4 targets MELK in immunoassays as a matched antibody pair. Validated in Sandwich ELISA.

Capture antibody: MELK Recombinant antibody, PBS Only (Capture/Detector) 82893-2-PBS (230106A4). 100 µg. Concentration 1 mg/mL.

Detection antibody: MELK Recombinant antibody, PBS Only (Detector) 82893-6-PBS (230106E8). 100 µg. Concentration 1 mg/mL.

Unconjugated rabbit recombinant monoclonal antibody pair in PBS only storage buffer at a concentration of 1 mg/mL, ready for conjugation. Created using Proteintech's proprietary in-house recombinant technology. Recombinant production enables unrivalled batch-to-batch consistency, easy scale-up, and future security of supply.

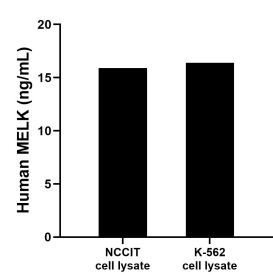
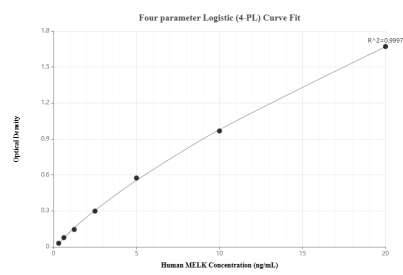
Matched antibody pairs are designed for use in a variety of assays and platforms that require matched antibody pairs.

Antibody use should be optimized for each application and assay.

## Storage

Storage:  
Store at -80°C.  
The product is shipped with ice packs. Upon receipt, store it immediately at -80°C  
Storage buffer:  
PBS only

## Selected Validation Data



Sandwich ELISA standard curve of MP00075-4, Human MELK Recombinant Matched Antibody Pair - PBS only. 82893-2-PBS was coated to a plate as the capture antibody and incubated with serial dilutions of standard Ag1897. 82893-6-PBS was HRP conjugated as the detection antibody. Range: 0.313-20 ng/mL

NCCIT and K-562 cell lysate were measured. The human MELK concentration of detected samples was determined to be 15.9 ng/mL (based on a 4.5 mg/mL extract load) in NCCIT cell lysate and 16.4 ng/mL (based on a 4.5 mg/mL extract load) in K-562 cell lysate.