

Cytokeratin 13 Recombinant Matched Antibody Pair, PBS Only

Catalog Number: MP00074-2

Capture Antibody Information

Catalog Number:
83058-1-PBS
Host:
Rabbit
Isotype:
IgG
Purification Method:
Protein A purification

Clone ID:
230366B10
Reactivity:
human, mouse, rat
GenBank:
BC002661
Immunogen Catalog Number:
Ag0217

Conjugate:
Unconjugated
Full name:
keratin 13
Gene ID:
3860

Detection Antibody Information

Catalog Number:
83058-5-PBS
Host:
Rabbit
Isotype:
IgG
Purification Method:
Protein A purification

Clone ID:
230366C3
Reactivity:
human
GenBank:
BC002661
Immunogen Catalog Number:
Ag0217

Conjugate:
Unconjugated
Full name:
keratin 13
Gene ID:
3860

Applications

Tested Applications:
Sandwich ELISA

Range:
0.313-20 ng/mL (Sandwich ELISA)

Recommended Dilutions:
It is recommended that this reagent should be titrated in each testing system to obtain optimal results.

Product Information

MP00074-2 targets Cytokeratin 13 in immunoassays as a matched antibody pair. Validated in Sandwich ELISA.

Capture antibody: Cytokeratin 13 Recombinant antibody, PBS Only (Capture) 83058-1-PBS (230366B10). 100 µg. Concentration 1 mg/mL.

Detection antibody: Cytokeratin 13 Recombinant antibody, PBS Only (Detector) 83058-5-PBS (230366C3). 100 µg. Concentration 1 mg/mL.

Alternative Cytokeratin 13 matched antibody pairs: MP00074-1

Unconjugated rabbit recombinant monoclonal antibody pair in PBS only storage buffer at a concentration of 1 mg/mL, ready for conjugation. Created using Proteintech's proprietary in-house recombinant technology. Recombinant production enables unrivalled batch-to-batch consistency, easy scale-up, and future security of supply.

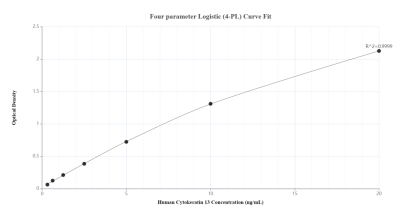
Matched antibody pairs are designed for use in a variety of assays and platforms that require matched antibody pairs.

Antibody use should be optimized for each application and assay.

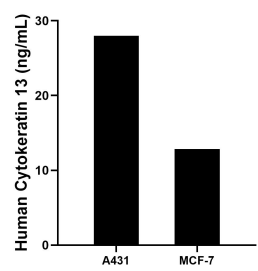
Storage

Storage:
Store at -80°C.
The product is shipped with ice packs. Upon receipt, store it immediately at -80°C
Storage buffer:
PBS only

Selected Validation Data



Sandwich ELISA standard curve of MP00074-2, Human Cytokeratin 13 Recombinant Matched Antibody Pair - PBS only. 83058-1-PBS was coated to a plate as the capture antibody and incubated with serial dilutions of standard Ag0217. 83058-5-PBS was HRP conjugated as the detection antibody. Range: 0.313-20 ng/mL



The mean Cytokeratin 13 concentration was determined to be 28.00 ng/mL in A431 cell extract based on a 1.50 mg/mL extract load and 12.84 ng/mL in MCF-7 cell extract based on a 1.20 mg/mL extract load.