

LAMP5 Recombinant Matched Antibody Pair, PBS Only

Catalog Number: MP00069-2

Capture Antibody Information

Catalog Number:
82992-3-PBS
Host:
Rabbit
Isotype:
IgG
Purification Method:
Protein A purification

Clone ID:
230102G11
Reactivity:
human
GenBank:
BC050727
Immunogen Catalog Number:
Ag33894

Conjugate:
Unconjugated
Full name:
chromosome 20 open reading frame 103
Gene ID:
24141

Detection Antibody Information

Catalog Number:
82992-4-PBS
Host:
Rabbit
Isotype:
IgG
Purification Method:
Protein A purification

Clone ID:
230102H4
Reactivity:
human
GenBank:
BC050727
Immunogen Catalog Number:
Ag33894

Conjugate:
Unconjugated
Full name:
chromosome 20 open reading frame 103
Gene ID:
24141

Applications

Tested Applications:
Cytometric bead array

Range:
0.625-20 ng/mL (Cytometric Bead Array)

Recommended Dilutions:
It is recommended that this reagent should be titrated in each testing system to obtain optimal results.

Product Information

MP00069-2 targets LAMP5 in immunoassays as a matched antibody pair. Validated in Cytometric bead array.

Capture antibody: LAMP5 Recombinant antibody, PBS Only (Capture) 82992-3-PBS (230102G11). 100 μ g. Concentration 1 mg/mL.

Detection antibody: LAMP5 Recombinant antibody, PBS Only (Capture/Detector) 82992-4-PBS (230102H4). 100 μ g. Concentration 1 mg/mL.

Alternative LAMP5 matched antibody pairs: MP00069-1, MP00069-3

Unconjugated rabbit recombinant monoclonal antibody pair in PBS only storage buffer at a concentration of 1 mg/mL, ready for conjugation. Created using Proteintech's proprietary in-house recombinant technology. Recombinant production enables unrivalled batch-to-batch consistency, easy scale-up, and future security of supply.

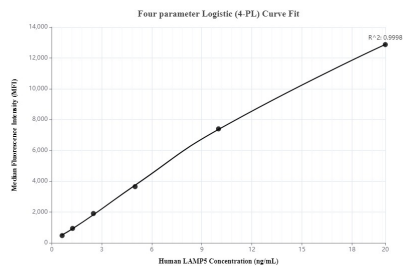
Matched antibody pairs are designed for use in a variety of assays and platforms that require matched antibody pairs.

Antibody use should be optimized for each application and assay.

Storage

Storage:
Store at -80°C.
The product is shipped with ice packs. Upon receipt, store it immediately at -80°C
Storage buffer:
PBS only

Selected Validation Data



Cytometric bead array standard curve of MP00069-2, LAMP5 Recombinant Matched Antibody Pair, PBS Only. Capture antibody: 82992-3-PBS. Detection antibody: 82992-4-PBS. Standard: Ag33894. Range: 0.625-20 ng/mL