

IL-1R1 Recombinant Matched Antibody Pair, PBS Only

Catalog Number: **MP00062-3**

Capture Antibody Information

Catalog Number:
84788-3-PBS
Host:
Rabbit
Isotype:
IgG
Purification Method:
Protein A purification

Clone ID:
242245A9
Reactivity:
human
GenBank:
NM_000877.4

Conjugate:
Unconjugated
Full name:
interleukin 1 receptor, type I
Gene ID:
3554

Detection Antibody Information

Catalog Number:
84788-1-PBS
Host:
Rabbit
Isotype:
IgG
Purification Method:
Protein A purification

Clone ID:
242245A10
Reactivity:
human
GenBank:
NM_000877.4

Conjugate:
Unconjugated
Full name:
interleukin 1 receptor, type I
Gene ID:
3554

Applications

Tested Applications:
Cytometric bead array, Sandwich ELISA

Range:
0.625-40 ng/mL (Cytometric Bead Array)
78.1-5000 pg/mL (Sandwich ELISA)

Recommended Dilutions:
It is recommended that this reagent should be titrated in each testing system to obtain optimal results.

Product Information

MP00062-3 targets IL-1R1 in immunoassays as a matched antibody pair. Validated in Cytometric bead array, Sandwich ELISA.

Capture antibody: IL1R1 Recombinant antibody, PBS Only (Capture) 84788-3-PBS (242245A9). 100 µg. Concentration 1 mg/mL.

Detection antibody: IL1R1 Recombinant antibody, PBS Only (Detector) 84788-1-PBS (242245A10). 100 µg. Concentration 1 mg/mL.

Unconjugated rabbit recombinant monoclonal antibody pair in PBS only storage buffer at a concentration of 1 mg/mL, ready for conjugation. Created using Proteintech's proprietary in-house recombinant technology. Recombinant production enables unrivalled batch-to-batch consistency, easy scale-up, and future security of supply.

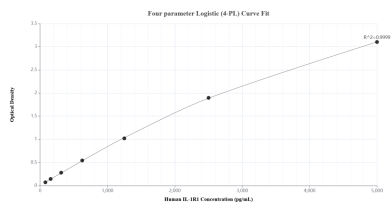
Matched antibody pairs are designed for use in a variety of assays and platforms that require matched antibody pairs.

Antibody use should be optimized for each application and assay.

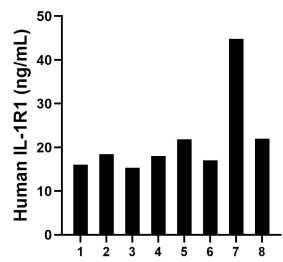
Storage

Storage:
Store at -80°C.
The product is shipped with ice packs. Upon receipt, store it immediately at -80°C
Storage buffer:
PBS only

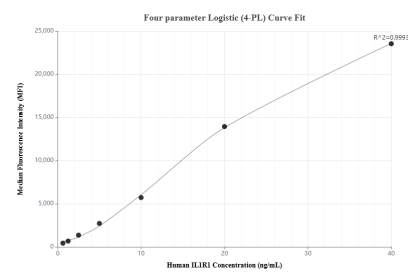
Selected Validation Data



Sandwich ELISA standard curve of MP00062-3, Human IL-1R1 Recombinant Matched Antibody Pair - PBS only. 84788-3-PBS was coated to a plate as the capture antibody and incubated with serial dilutions of standard Eg3002. 84788-1-PBS was HRP conjugated as the detection antibody. Range: 78.1-5000 pg/mL.



Serum of eight individual healthy human donors was measured. The IL-1R1 concentration of detected samples was determined to be 21.7 ng/mL with a range of 15.3-44.8 ng/mL.



Cytometric bead array standard curve of MP00062-3, IL-1R1 Recombinant Matched Antibody Pair, PBS Only. Capture antibody: 84788-3-PBS. Detection antibody: 84788-1-PBS. Standard: Eg3002. Range: 0.625-40 ng/mL.