

# SLC29A3 Recombinant Matched Antibody Pair, PBS Only

Catalog Number: **MP00061-1**

## Capture Antibody Information

**Catalog Number:**  
83036-2-PBS  
**Host:**  
Rabbit  
**Isotype:**  
IgG  
**Purification Method:**  
Protein A purification

**Clone ID:**  
230281E12  
**Reactivity:**  
Human  
**GenBank:**  
BC120996  
**Immunogen Catalog Number:**  
Ag18563

**Conjugate:**  
Unconjugated  
**Full name:**  
solute carrier family 29 (nucleoside transporters), member 3  
**Gene ID:**  
55315

## Detection Antibody Information

**Catalog Number:**  
83036-1-PBS  
**Host:**  
Rabbit  
**Isotype:**  
IgG  
**Purification Method:**  
Protein A purification

**Clone ID:**  
230281C12  
**Reactivity:**  
Human  
**GenBank:**  
BC120996  
**Immunogen Catalog Number:**  
Ag18563

**Conjugate:**  
Unconjugated  
**Full name:**  
solute carrier family 29 (nucleoside transporters), member 3  
**Gene ID:**  
55315

## Applications

**Tested Applications:**  
Cytometric bead array

**Range:**  
0.625-20 ng/mL (Cytometric Bead Array)

**Recommended Dilutions:**  
It is recommended that this reagent should be titrated in each testing system to obtain optimal results.

## Product Information

MP00061-1 targets SLC29A3 in immunoassays as a matched antibody pair. Validated in Cytometric bead array.

Capture antibody: SLC29A3 Recombinant antibody, PBS Only (Capture) 83036-2-PBS (230281E12). 100 µg. Concentration 1 mg/mL.

Detection antibody: SLC29A3 Recombinant antibody, PBS Only (Detector) 83036-1-PBS (230281C12). 100 µg. Concentration 1 mg/mL.

Unconjugated rabbit recombinant monoclonal antibody pair in PBS only (BSA and azide free) storage buffer at a concentration of 1 mg/mL, ready for conjugation. Created using Proteintech's proprietary in-house recombinant technology. Recombinant production enables unrivalled batch-to-batch consistency, easy scale-up, and future security of supply.

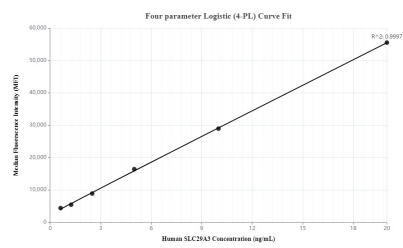
Matched antibody pairs are designed for use in a variety of assays and platforms that require matched antibody pairs.

Antibody use should be optimized for each application and assay.

## Storage

**Storage:**  
Store at -80°C.  
**Storage buffer:**  
PBS only

## Selected Validation Data



Cytometric bead array standard curve of MP00061-1, SLC29A3 Recombinant Matched Antibody Pair, PBS Only. Capture antibody: 83036-2-PBS. Detection antibody: 83036-1-PBS. Standard: Ag18563. Range: 0.625-20 ng/mL.