

LCMT2 Recombinant Matched Antibody Pair, PBS Only

Catalog Number: MP00060-1

Capture Antibody Information

Catalog Number:
83073-1-PBS
Host:
Rabbit
Isotype:
IgG
Purification Method:
Protein A purification

Clone ID:
230405D2
Reactivity:
Human
GenBank:
BC015949
Immunogen Catalog Number:
Ag11145

Conjugate:
Unconjugated
Full name:
leucine carboxyl methyltransferase 2
Gene ID:
9836

Detection Antibody Information

Catalog Number:
83073-2-PBS
Host:
Rabbit
Isotype:
IgG
Purification Method:
Protein A purification

Clone ID:
230405H8
Reactivity:
Human
GenBank:
BC015949
Immunogen Catalog Number:
Ag11145

Conjugate:
Unconjugated
Full name:
leucine carboxyl methyltransferase 2
Gene ID:
9836

Applications

Tested Applications:
Cytometric bead array

Range:
0.625-20 ng/mL (Cytometric Bead Array)

Recommended Dilutions:
It is recommended that this reagent should be titrated in each testing system to obtain optimal results.

Product Information

MP00060-1 targets LCMT2 in immunoassays as a matched antibody pair. Validated in Cytometric bead array.

Capture antibody: LCMT2 Recombinant antibody, PBS Only (Capture) 83073-1-PBS (230405D2). 100 µg. Concentration 1 mg/mL.

Detection antibody: LCMT2 Recombinant antibody, PBS Only (Detector) 83073-2-PBS (230405H8). 100 µg. Concentration 1 mg/mL.

Unconjugated rabbit recombinant monoclonal antibody pair in PBS only (BSA and azide free) storage buffer at a concentration of 1 mg/mL, ready for conjugation. Created using Proteintech's proprietary in-house recombinant technology. Recombinant production enables unrivalled batch-to-batch consistency, easy scale-up, and future security of supply.

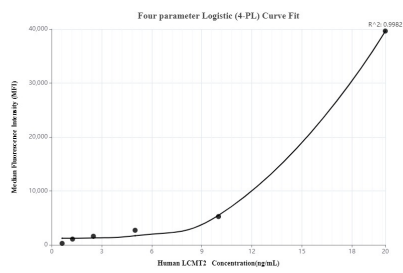
Matched antibody pairs are designed for use in a variety of assays and platforms that require matched antibody pairs.

Antibody use should be optimized for each application and assay.

Storage

Storage:
Store at -80°C.
Storage buffer:
PBS only

Selected Validation Data



Cytometric bead array standard curve of MP00060-1, LCMT2 Recombinant Matched Antibody Pair, PBS Only. Capture antibody: 83073-1-PBS. Detection antibody: 83073-2-PBS. Standard: Ag11145. Range: 0.625-20 ng/mL