

For Research Use Only

OATP1B1/SLCO1B1 Recombinant Matched Antibody Pair, PBS Only



Catalog Number:MP00051-4

Capture Antibody Information

Catalog Number:
83054-6-PBS
Host:
Rabbit
Isotype:
IgG
Purification Method:
Protein A purification

Clone ID:
230090B5
Reactivity:
human
GenBank:
NM_006446

Conjugate:
Unconjugated
Full name:
solute carrier organic anion transporter family, member 1B1
Gene ID:
10599

Detection Antibody Information

Catalog Number:
83054-3-PBS
Host:
Rabbit
Isotype:
IgG
Purification Method:
Protein A purification

Clone ID:
230090G9
Reactivity:
human
GenBank:
NM_006446

Conjugate:
Unconjugated
Full name:
solute carrier organic anion transporter family, member 1B1
Gene ID:
10599

Applications

Tested Applications:
Sandwich ELISA

Range:
0.156-10 ng/mL (Sandwich ELISA)

Recommended Dilutions:
It is recommended that this reagent should be titrated in each testing system to obtain optimal results.

Product Information

MP00051-4 targets OATP1B1/SLCO1B1 in immunoassays as a matched antibody pair. Validated in Sandwich ELISA.

Capture antibody: OATP1B1/SLCO1B1 Recombinant antibody, PBS Only (Capture) 83054-6-PBS (230090B5). 100 µg. Concentration 1 mg/mL.

Detection antibody: OATP1B1/SLCO1B1 Recombinant antibody, PBS Only (Detector) 83054-3-PBS (230090G9). 100 µg. Concentration 1 mg/mL.

Alternative OATP1B1/SLCO1B1 matched antibody pairs: MP00051-1, MP00051-2, MP00051-3

Unconjugated rabbit recombinant monoclonal antibody pair in PBS only storage buffer at a concentration of 1 mg/mL, ready for conjugation. Created using Proteintech's proprietary in-house recombinant technology. Recombinant production enables unrivalled batch-to-batch consistency, easy scale-up, and future security of supply.

Matched antibody pairs are designed for use in a variety of assays and platforms that require matched antibody pairs.

Antibody use should be optimized for each application and assay.

Storage

Storage:
Store at -80°C.
The product is shipped with ice packs. Upon receipt, store it immediately at -80°C
Storage buffer:
PBS only

For technical support and original validation data for this product please contact:

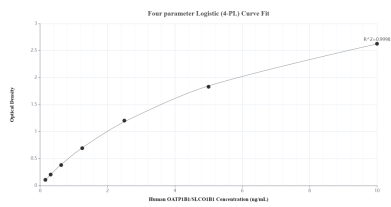
T: 4006900926

E: Proteintech-CN@ptglab.com

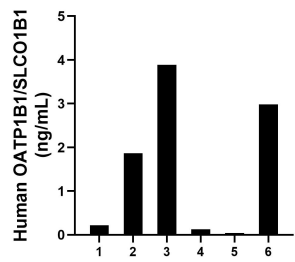
W: ptgcn.com

This product is exclusively available under Proteintech Group brand and is not available to purchase from any other manufacturer.

Selected Validation Data



Sandwich ELISA standard curve of MP00051-4, Human OATP1B1/SLCO1B1 Recombinant Matched Antibody Pair - PBS only. 83054-6-PBS was coated to a plate as the capture antibody and incubated with serial dilutions of standard 5Y00964. 83054-3-PBS was HRP conjugated as the detection antibody. Range: 0.156-10 ng/mL



Serum of six individual healthy human donors was measured. The OATP1B1/SLCO1B1 concentration of detected samples was determined to be 1.52 ng/mL with a range of 0.04-3.89 ng/mL