

MTAP Recombinant Matched Antibody Pair, PBS Only

Catalog Number: **MP00050-2**

Capture Antibody Information

Catalog Number: 83005-4-PBS	Clone ID: 240030E10	Conjugate: Unconjugated
Host: Rabbit	Reactivity: human	Full name: methylthioadenosine phosphorylase
Isotype: IgG	GenBank: BC018625	Gene ID: 4507
Purification Method: Protein A purification	Immunogen Catalog Number: Ag2051	

Detection Antibody Information

Catalog Number: 83005-3-PBS	Clone ID: 240030A11	Conjugate: Unconjugated
Host: Rabbit	Reactivity: human	Full name: methylthioadenosine phosphorylase
Isotype: IgG	GenBank: BC018625	Gene ID: 4507
Purification Method: Protein A purification	Immunogen Catalog Number: Ag2051	

Applications

Tested Applications: Cytometric bead array, Sandwich ELISA	Range: 0.625-20 ng/mL (Cytometric Bead Array) 0.3125-20ng/mL (Sandwich ELISA)	Recommended Dilutions: It is recommended that this reagent should be titrated in each testing system to obtain optimal results.
--	--	---

Product Information

MP00050-2 targets MTAP in immunoassays as a matched antibody pair. Validated in Cytometric bead array, Sandwich ELISA.

Capture antibody: MTAP Recombinant antibody, PBS Only (Capture) 83005-4-PBS (240030E10). 100 µg. Concentration 1 mg/mL.

Detection antibody: MTAP Recombinant antibody, PBS Only (Detector) 83005-3-PBS (240030A11). 100 µg. Concentration 1 mg/mL.

Alternative MTAP matched antibody pairs: MP00050-1, MP00050-3

Unconjugated rabbit recombinant monoclonal antibody pair in PBS only storage buffer at a concentration of 1 mg/mL, ready for conjugation. Created using Proteintech's proprietary in-house recombinant technology. Recombinant production enables unrivalled batch-to-batch consistency, easy scale-up, and future security of supply.

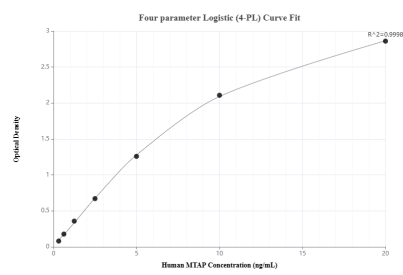
Matched antibody pairs are designed for use in a variety of assays and platforms that require matched antibody pairs.

Antibody use should be optimized for each application and assay.

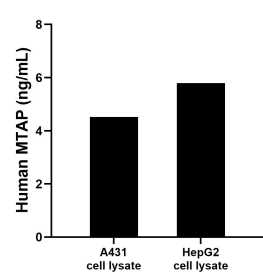
Storage

Storage:
Store at -80°C.
The product is shipped with ice packs. Upon receipt, store it immediately at -80°C
Storage buffer:
PBS only

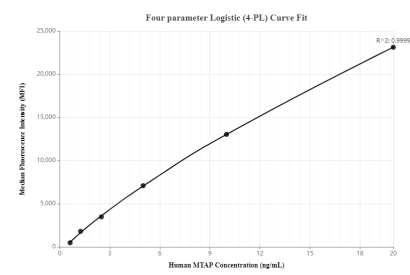
Selected Validation Data



Sandwich ELISA standard curve of MP00050-2, Human MTAP Recombinant Matched Antibody Pair - PBS only. 83005-4-PBS was coated to a plate as the capture antibody and incubated with serial dilutions of standard Ag2051. 83005-3-PBS was HRP conjugated as the detection antibody. Range: 0.3125-20ng/mL



A431 and HepG2 cell lysate were measured. The human MTAP concentration of detected samples was determined to be 4.52 ng/mL (based on a 1.5 mg/mL extract load) in A431 cell lysate and 5.80 ng/mL (based on a 1.2 mg/mL extract load) in HepG2 cell lysate.



Cytometric bead array standard curve of MP00050-2, MTAP Recombinant Matched Antibody Pair, PBS Only. Capture antibody: 83005-4-PBS. Detection antibody: 83005-3-PBS. Standard: Ag2051. Range: 0.625-20 ng/mL