

# PARP2 Recombinant Matched Antibody Pair, PBS Only

Catalog Number: MP00045-4

## Capture Antibody Information

**Catalog Number:**

83071-5-PBS

**Host:**

Rabbit

**Isotype:**

IgG

**Purification Method:**

Protein A purification

**Clone ID:**

230386C7

**Reactivity:**

human

**GenBank:**

NM\_005484

**Conjugate:**

Unconjugated

**Full name:**

poly (ADP-ribose) polymerase 2

**Gene ID:**

10038

## Detection Antibody Information

**Catalog Number:**

83071-3-PBS

**Host:**

Rabbit

**Isotype:**

IgG

**Purification Method:**

Protein A purification

**Clone ID:**

230386E12

**Reactivity:**

human

**GenBank:**

NM\_005484

**Conjugate:**

Unconjugated

**Full name:**

poly (ADP-ribose) polymerase 2

**Gene ID:**

10038

## Applications

**Tested Applications:**

Sandwich ELISA

**Range:**

39.1-2500 pg/mL (Sandwich ELISA)

**Recommended Dilutions:**

It is recommended that this reagent should be titrated in each testing system to obtain optimal results.

## Product Information

MP00045-4 targets PARP2 in immunoassays as a matched antibody pair. Validated in Sandwich ELISA.

Capture antibody: PARP2 Recombinant antibody, PBS Only (Capture) 83071-5-PBS (230386C7). 100 µg. Concentration 1 mg/mL.

Detection antibody: PARP2 Recombinant antibody, PBS Only (Detector) 83071-3-PBS (230386E12). 100 µg. Concentration 1 mg/mL.

Alternative PARP2 matched antibody pairs: MP00045-1, MP00045-2, MP00045-3

Unconjugated rabbit recombinant monoclonal antibody pair in PBS only storage buffer at a concentration of 1 mg/mL, ready for conjugation. Created using Proteintech's proprietary in-house recombinant technology. Recombinant production enables unrivalled batch-to-batch consistency, easy scale-up, and future security of supply.

Matched antibody pairs are designed for use in a variety of assays and platforms that require matched antibody pairs.

Antibody use should be optimized for each application and assay.

## Storage

**Storage:**

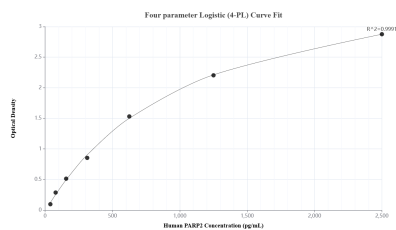
Store at -80°C.

**The product is shipped with ice packs. Upon receipt, store it immediately at -80°C**

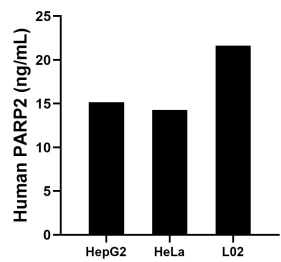
**Storage buffer:**

PBS only

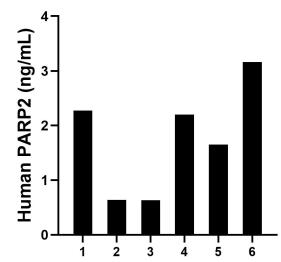
## Selected Validation Data



Sandwich ELISA standard curve of MP00045-4, Human PARP2 Recombinant Matched Antibody Pair - PBS only. 83071-5-PBS was coated to a plate as the capture antibody and incubated with serial dilutions of standard SY01205. 83071-3-PBS was HRP conjugated as the detection antibody. Range: 39.1-2500 pg/mL.



The mean PARP2 concentration was determined to be 15.2 ng/mL in HepG2 cell extract based on a 2.0 mg/mL extract load, 14.3 ng/mL in HeLa cell extract based on a 1.2 mg/mL extract load and 21.6 ng/mL in L02 cell extract based on a 1.3 mg/mL extract load.



Serum of six individual healthy human donors was measured. The PARP2 concentration of detected samples was determined to be 1.8 ng/mL with a range of 0.6-3.2 ng/mL.