

RAB32 Recombinant Matched Antibody Pair, PBS Only

Catalog Number: **MP00043-3**

Capture Antibody Information

Catalog Number: 82960-3-PBS	Clone ID: 230315C2	Conjugate: Unconjugated
Host: Rabbit	Reactivity: human	Full name: RAB32, member RAS oncogene family
Isotype: IgG	GenBank: BC015061	Gene ID: 10981
Purification Method: Protein A purification	Immunogen Catalog Number: Ag1450	

Detection Antibody Information

Catalog Number: 82960-4-PBS	Clone ID: 230315F1	Conjugate: Unconjugated
Host: Rabbit	Reactivity: human	Full name: RAB32, member RAS oncogene family
Isotype: IgG	GenBank: BC015061	Gene ID: 10981
Purification Method: Protein A purification	Immunogen Catalog Number: Ag1450	

Applications

Tested Applications: Sandwich ELISA	Range: 0.156-10 ng/mL (Sandwich ELISA)	Recommended Dilutions: It is recommended that this reagent should be titrated in each testing system to obtain optimal results.
---	--	---

Product Information

MP00043-3 targets RAB32 in immunoassays as a matched antibody pair. Validated in Sandwich ELISA.

Capture antibody: RAB32 Recombinant antibody, PBS Only (Capture) 82960-3-PBS (230315C2). 100 µg. Concentration 1 mg/mL.

Detection antibody: RAB32 Recombinant antibody, PBS Only (Capture/Detector) 82960-4-PBS (230315F1). 100 µg. Concentration 1 mg/mL.

Unconjugated rabbit recombinant monoclonal antibody pair in PBS only storage buffer at a concentration of 1 mg/mL, ready for conjugation. Created using Proteintech's proprietary in-house recombinant technology. Recombinant production enables unrivalled batch-to-batch consistency, easy scale-up, and future security of supply.

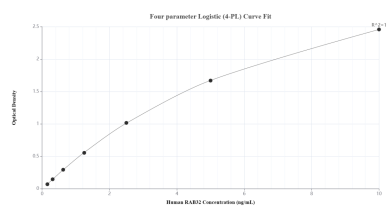
Matched antibody pairs are designed for use in a variety of assays and platforms that require matched antibody pairs.

Antibody use should be optimized for each application and assay.

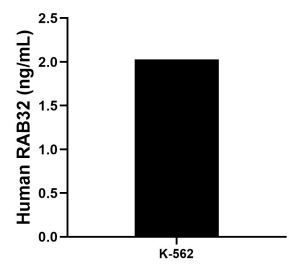
Storage

Storage:
Store at -80°C.
The product is shipped with ice packs. Upon receipt, store it immediately at -80°C
Storage buffer:
PBS only

Selected Validation Data



Sandwich ELISA standard curve of MP00043-3, Human RAB32 Recombinant Matched Antibody Pair - PBS only. 82960-3-PBS was coated to a plate as the capture antibody and incubated with serial dilutions of standard Ag1450. 82960-4-PBS was HRP conjugated as the detection antibody. Range: 0.156-10 ng/mL



The mean RAB32 concentration was determined to be 2.03 ng/mL in K-562 cell extract based on a 4.50 mg/mL extract load.