

# ECM1 Recombinant Matched Antibody Pair, PBS Only

Catalog Number: **MP00011-4**

## Capture Antibody Information

Catalog Number:  
83067-7-PBS  
Host:  
Rabbit  
Isotype:  
IgG  
Purification Method:  
Protein A purification

Clone ID:  
230321A11  
Reactivity:  
human  
GenBank:  
BC023505

Conjugate:  
Unconjugated  
Full name:  
extracellular matrix protein 1  
Gene ID:  
1893

## Detection Antibody Information

Catalog Number:  
83067-1-PBS  
Host:  
Rabbit  
Isotype:  
IgG  
Purification Method:  
Protein A purification

Clone ID:  
230321A4  
Reactivity:  
human  
GenBank:  
BC023505

Conjugate:  
Unconjugated  
Full name:  
extracellular matrix protein 1  
Gene ID:  
1893

## Applications

Tested Applications:  
Sandwich ELISA

Range:  
15.6-1000 pg/mL (Sandwich ELISA)

Recommended Dilutions:  
It is recommended that this reagent should be titrated in each testing system to obtain optimal results.

## Product Information

MP00011-4 targets ECM1 in immunoassays as a matched antibody pair. Validated in Sandwich ELISA.

Capture antibody: ECM1 Recombinant antibody, PBS Only (Capture) 83067-7-PBS (230321A11). 100 µg. Concentration 1 mg/mL.

Detection antibody: ECM1 Recombinant antibody, PBS Only (Capture/Detector) 83067-1-PBS (230321A4). 100 µg. Concentration 1 mg/mL.

Alternative ECM1 matched antibody pairs: MP00011-1, MP00011-2, MP00011-3, MP50074-1

Unconjugated rabbit recombinant monoclonal antibody pair in PBS only storage buffer at a concentration of 1 mg/mL, ready for conjugation. Created using Proteintech's proprietary in-house recombinant technology. Recombinant production enables unrivalled batch-to-batch consistency, easy scale-up, and future security of supply.

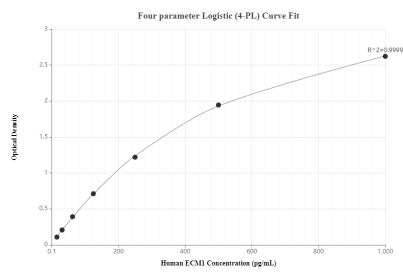
Matched antibody pairs are designed for use in a variety of assays and platforms that require matched antibody pairs.

Antibody use should be optimized for each application and assay.

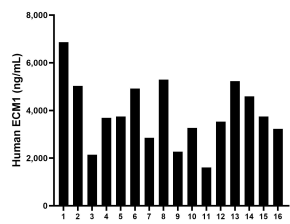
## Storage

Storage:  
Store at -80°C.  
The product is shipped with ice packs. Upon receipt, store it immediately at -80°C  
Storage buffer:  
PBS only

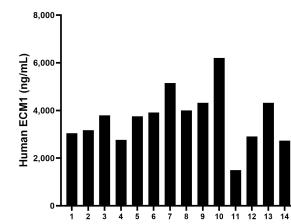
## Selected Validation Data



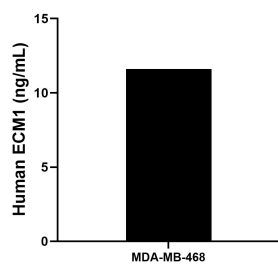
Sandwich ELISA standard curve of MP00011-4, Human ECM1 Recombinant Matched Antibody Pair - PBS only. 83067-7-PBS was coated to a plate as the capture antibody and incubated with serial dilutions of standard Eg0533. 83067-1-PBS was HRP conjugated as the detection antibody. Range: 15.6-1000 pg/mL



Serum of fourteen individual healthy human donors was measured. The ECM1 concentration of detected samples was determined to be 3,875.31 ng/mL with a range of 1,605.39-6,867.83 ng/mL.



Plasma of fourteen individual healthy human donors was measured. The ECM1 concentration of detected samples was determined to be 3,683.47 ng/mL with a range of 1,495.22-6,198.62 ng/mL.



MDA-MB-468 were cultured in DMEM supplemented with 10% fetal calf serum, 50  $\mu$  M  $\beta$ -mercaptoethanol, 2 mM L-glutamine, 100 U/mL penicillin and 100  $\mu$  g/mL streptomycin sulfate. The cell culture supernatant was removed, assayed for human ECM1, and measured 11.6 ng/mL.