

CD147 Recombinant Matched Antibody Pair, PBS Only

Catalog Number: **MP00004-1**

Capture Antibody Information

Catalog Number:

82909-6-PBS

Host:

Rabbit

Isotype:

IgG

Purification Method:

Protein A purification

Clone ID:

230046G9

Reactivity:

human

GenBank:

BC009040

Conjugate:

Unconjugated

Full name:

basigin (Ok blood group)

Gene ID:

682

Detection Antibody Information

Catalog Number:

82909-4-PBS

Host:

Rabbit

Isotype:

IgG

Purification Method:

Protein A purification

Clone ID:

230046D12

Reactivity:

human

GenBank:

BC009040

Conjugate:

Unconjugated

Full name:

basigin (Ok blood group)

Gene ID:

682

Applications

Tested Applications:

Cytometric bead array, Sandwich ELISA

Range:

0.625-20 ng/mL (Cytometric Bead Array)
20-1250 pg/mL (Sandwich ELISA)

Recommended Dilutions:

It is recommended that this reagent should be titrated in each testing system to obtain optimal results.

Product Information

MP00004-1 targets CD147 in immunoassays as a matched antibody pair. Validated in Cytometric bead array, Sandwich ELISA.

Capture antibody: CD147 Recombinant antibody, PBS Only (Capture) 82909-6-PBS (230046G9). 100 µg. Concentration 1 mg/mL.

Detection antibody: CD147 Recombinant antibody, PBS Only (Capture/Detector) 82909-4-PBS (230046D12). 100 µg. Concentration 1 mg/mL.

Unconjugated rabbit recombinant monoclonal antibody pair in PBS only storage buffer at a concentration of 1 mg/mL, ready for conjugation. Created using Proteintech's proprietary in-house recombinant technology. Recombinant production enables unrivalled batch-to-batch consistency, easy scale-up, and future security of supply.

Matched antibody pairs are designed for use in a variety of assays and platforms that require matched antibody pairs.

Antibody use should be optimized for each application and assay.

Storage

Storage:

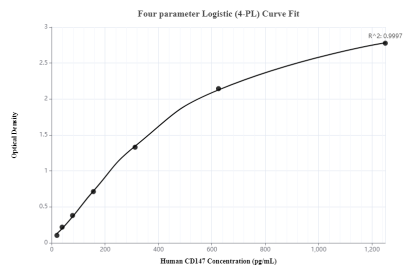
Store at -80°C.

The product is shipped with ice packs. Upon receipt, store it immediately at -80°C

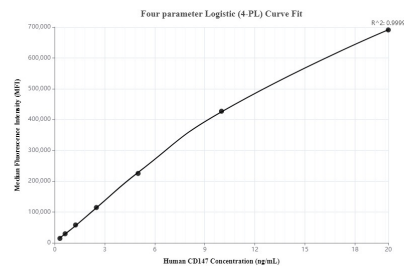
Storage buffer:

PBS only

Selected Validation Data



Sandwich ELISA standard curve of MP00004-1, CD147 Recombinant Matched Antibody Pair, PBS Only. Capture antibody: 82909-6-PBS. Detection antibody: 82909-4-PBS. Standard: Eg0436. Range: 20-1250 pg/mL.



Cytometric bead array standard curve of MP00004-1, CD147 Recombinant Matched Antibody Pair, PBS Only. Capture antibody: 82909-6-PBS. Detection antibody: 82909-4-PBS. Standard: Eg0436. Range: 0.625-20 ng/mL.