

For Research Use Only

Human NK Cell Isolation Kit

Catalog Number: KMS308



Description

Natural Killer cells, also as known as NK cells, are a type of cytotoxic lymphocyte belong to the innate immune system which are important to adaptive immune response in vertebrate. Around 5-20% of all circulating lymphocytes are NK cells in human. Human NK Cell Isolation kit is designed to isolate untouched NK cells which contains a biotin labeled antibody cocktail and streptavidin conjugated magnetic beads. Through incubation of samples with biotin antibody cocktail followed by incubation of streptavidin beads, the magnetically labeled non-NK cells will be retained in the tube by magnetic separator. The untouched NK cells are collected in supernatant. Any downstream application can be performed on NK cells after separation, such as Flow Cytometry and in vitro culture.

Components

KMS308-10:

·MS308A-10: 300 μ L Human NK Cell Isolation Biotin Antibody Cocktail (CD3, CD4, CD8, CD19, CD14, CD15, CD279, CD36, CD235a, CD123)

·MS308B-10: 300 μ L streptavidin magnetic beads

KMS308-100:

·MS308A-100: 3mL Human NK Cell Isolation Biotin Antibody Cocktail (CD3, CD4, CD8, CD19, CD14, CD15, CD279, CD36, CD235a, CD123)

·MS308B-100: 3mL streptavidin magnetic beads

Package

10test/100test

Storage buffer

2-8°C

Usage

PBS, pH7.4, 0.2% BSA and 0.05% Sodium Azide

Reactivity

Human

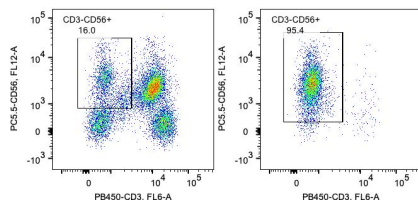
Beads diameter

2.7 μ m

Recommend usage

30 μ L biotin labeled antibody cocktail and 30 μ L streptavidin beads for 1×10^7 cells

Results



Representative example of enrichment: Following cell separation, cell suspension was stained with PB450-CD3(UCHT1), FITC-CD45(HI30), and PerCP-Cy5.5-CD56(MEM18) antibodies. All viable CD45+ cells are gated in the analysis. Left panel: CD3-CD56+ NK cells before selection; right panel CD3-CD56+ NK cells after selection. Human NK cell... isolation kit is tested using PBMC from three donors.