

# Human CD14 Magnetic Beads Kit

Catalog Number: KMS005

## Description

CD14 is a surface antigen expressed on monocyte/macrophage. It cooperates with other proteins to mediate innate immune response to bacterial LPS. 5%-10% human peripheral blood mononuclear cells (PBMC) express CD14. Human CD14 Magnetic Beads Kit is used for isolation or depletion of human CD14 monocytes/macrophages from PBMC, whole blood, or other sample types. Following incubation with biotinylated human CD14 antibody and Streptavidin magnetic beads, the cell sample is placed on a magnet. CD14<sup>+</sup> cells remain attached to magnetic beads after separation and can be used for downstream applications, such as in cell expansion. CD14<sup>-</sup> cells remain in supernatant and can also be used for further applications.

## Components

KMS005-10:  
 · MS001-10: 100μL 10mg/mL streptavidin magnetic beads  
 · MS65246-10: 100μL 0.1mg/mL Biotin-CD14 (clone: 26IC)  
 KMS005-100:  
 · MS001-100: 1mL 10mg/mL streptavidin magnetic beads  
 · MS65246-100: 1mL 0.1mg/mL Biotin-CD14 (clone: 26IC)

## Package

10test/100test

## Storage

2-8°C

## Storage buffer

PBS, pH7.4, 0.2% BSA and 0.05% Sodium Azide

## Reactivity

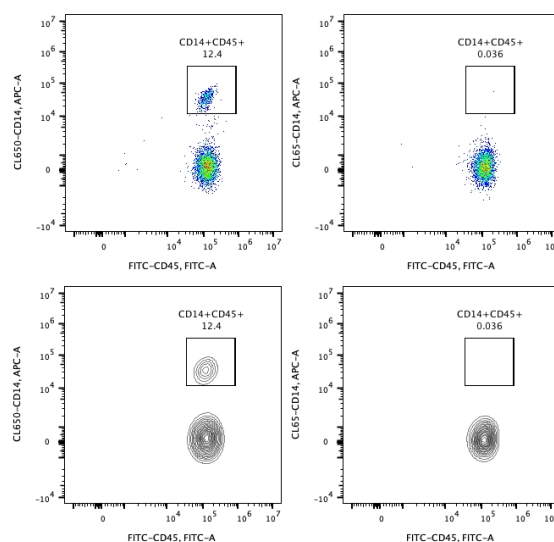
Human

## Recommend usage

10μL Biotin-CD14 antibody and 10μL streptavidin beads for  $1 \times 10^7$  cells.

## Results

Representative example of depletion



Following cell separation, cell suspension was stained with FITC-CD45(F10-89-4) and CL650-CD14(UCHM1) antibodies. All viable cells are gated in the analysis. Left panel: CD14<sup>+</sup>CD45<sup>+</sup> cells before selection. Right panel: CD14<sup>+</sup>CD45<sup>+</sup> cells after depletion. Human CD14 magnetic beads kit is tested using PBMC from three donors.

For technical support and original validation data for this product please contact:

T: 027-87531629 E: Proteintech-CN@ptglab.com W: ptgcn.com

This product is exclusively available under Proteintech Group brand and is not available to purchase from any other manufacturer.