

# IHCeasy<sup>®</sup> CD21 Ready-To-Use IHC Kit

Catalog Number: **KHC3310**

## General Information

Sample type:  
FFPE tissue  
Cited sample type:  
Reactivity:  
Human  
Cited Reactivity:

Assay type:  
Immunohistochemistry  
Primary antibody type:  
Rabbit Recombinant  
Secondary antibody type:  
Polymer-HRP-Goat anti-Rabbit

## Kit Component

Component	Size	Concentration
Antigen Retrieval Buffer	100 mL	50×
Washing Buffer	100 mL ×2	20×
Blocking Buffer	5 mL	RTU
Primary Antibody	5 mL	RTU
Secondary Antibody	5 mL	RTU
Chromogen Component A	0.2 mL	RTU
Chromogen Component B	4 mL	RTU
Signal Enhancer	5 mL	RTU
Counter Staining Reagent	5 mL	RTU
Mounting Media	5 mL	RTU
Control Slide	1 slide (Optional)	FFPE
Datasheet	1 Copy	
Manual	1 Copy	

## Storage Instructions

All the reagents are stored at 2-8°C. The kit is stable for 6 months from the date of receipt.

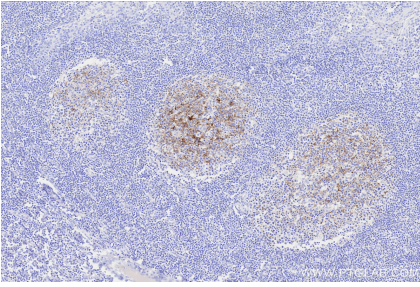
## Background

CD21, also known as complement receptor type 2 (CR2), complement C3d receptor, and Epstein-Barr virus receptor, is a transmembrane protein that contains a small cytoplasmic domain, a transmembrane region and an extracellular domain consisting of 15 tandem short consensus repeat sequences. It is expressed on B cells, follicular dendritic cells, thymocytes and a subset of peripheral T cells. CD21 binds complement fragments C3d, C3dg and iC3b and acts as a receptor for the Epstein-Barr virus. On B cells, together with CD19 and CD81, CD21 forms a complex that functions as a co-receptor to the BCR. It is involved in B cells activation and functions.

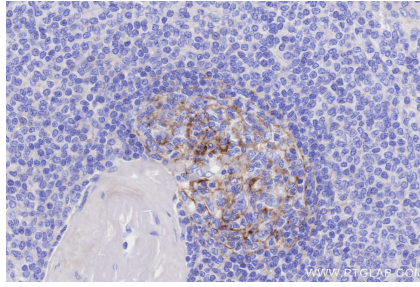
## Synonyms

C3DR, Complement C3d receptor, Complement receptor type 2, CR2, EBV receptor

## Selected Validation Data



Immunohistochemical analysis of paraffin-embedded human tonsillitis tissue slide using KHC3310 (CD21 IHC Kit).



Immunohistochemical analysis of paraffin-embedded human spleen tissue slide using KHC3310 (CD21 IHC Kit).