

IHCeasy[®] Glutaredoxin 5 Ready-To-Use IHC Kit

Catalog Number: **KHC3282**

General Information

Sample type:
FFPE tissue
Cited sample type:
Reactivity:
Human, Mouse
Cited Reactivity:

Assay type:
Immunohistochemistry
Primary antibody type:
Rabbit Polyclonal
Secondary antibody type:
Polymer-HRP-Goat anti-Rabbit

Kit Component

Component	Size	Concentration
Antigen Retrieval Buffer	100 mL	50×
Washing Buffer	100 mL ×2	20×
Blocking Buffer	5 mL	RTU
Primary Antibody	5 mL	RTU
Secondary Antibody	5 mL	RTU
Chromogen Component A	0.2 mL	RTU
Chromogen Component B	4 mL	RTU
Signal Enhancer	5 mL	RTU
Counter Staining Reagent	5 mL	RTU
Mounting Media	5 mL	RTU
Control Slide	1 slide (Optional)	FFPE
Datasheet	1 Copy	
Manual	1 Copy	

Storage Instructions

All the reagents are stored at 2-8°C. The kit is stable for 6 months from the date of receipt.

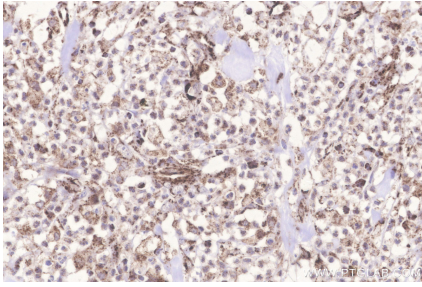
Background

Glutaredoxin 5 (GLRX5) is an essential protein engaging in mitochondrial iron-sulfur cluster (ISC) transfers to iron regulatory protein (IRP), m-aconitase, and ferrochelatase. GLRX5 deficiency impairs heme biosynthesis, causing sideroblastic anemia and variant nonketotic hyperglycinemia in humans. Mutations of GLRX5 lead to distinct effects on downstream ISC biosynthesis and maturation.

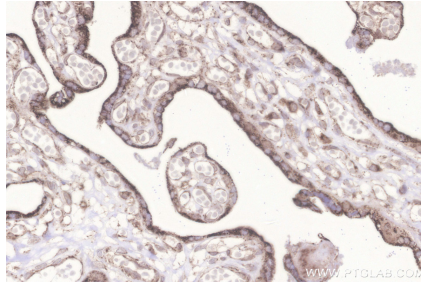
Synonyms

C14orf87, FLB4739, GLRX 5, GLRX5, Glutaredoxin-related protein 5, mitochondrial

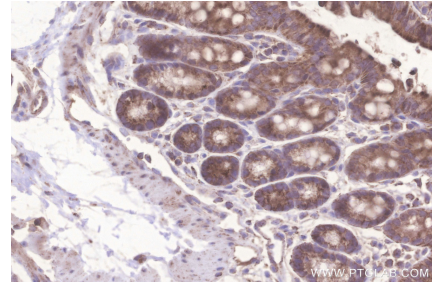
Selected Validation Data



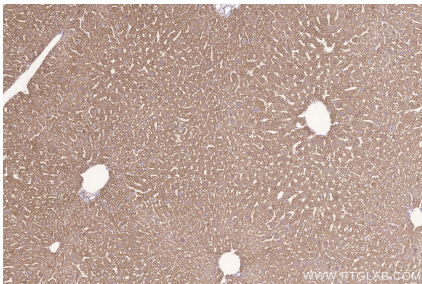
Immunohistochemical analysis of paraffin-embedded human colon cancer tissue slide using KHC3282 (Glutaredoxin 5 IHC Kit).



Immunohistochemical analysis of paraffin-embedded human placenta tissue slide using KHC3282 (Glutaredoxin 5 IHC Kit).



Immunohistochemical analysis of paraffin-embedded mouse colon tissue slide using KHC3282 (Glutaredoxin 5 IHC Kit).



Immunohistochemical analysis of paraffin-embedded mouse liver tissue slide using KHC3282 (Glutaredoxin 5 IHC Kit).