

IHCeasy[®] DCUN1D2 Ready-To-Use IHC Kit

Catalog Number: **KHC3272**

General Information

Sample type:
FFPE tissue

Cited sample type:

Reactivity:
Human, Mouse, Rat

Cited Reactivity:

Assay type:
Immunohistochemistry

Primary antibody type:
Rabbit Polyclonal

Secondary antibody type:
Polymer-HRP-Goat anti-Rabbit

Kit Component

Component	Size	Concentration
Antigen Retrieval Buffer	100 mL	50×
Washing Buffer	100 mL ×2	20×
Blocking Buffer	5 mL	RTU
Primary Antibody	5 mL	RTU
Secondary Antibody	5 mL	RTU
Chromogen Component A	0.2 mL	RTU
Chromogen Component B	4 mL	RTU
Signal Enhancer	5 mL	RTU
Counter Staining Reagent	5 mL	RTU
Mounting Media	5 mL	RTU
Control Slide	1 slide (Optional)	FFPE
Datasheet	1 Copy	
Manual	1 Copy	

Storage Instructions

All the reagents are stored at 2-8°C. The kit is stable for 6 months from the date of receipt.

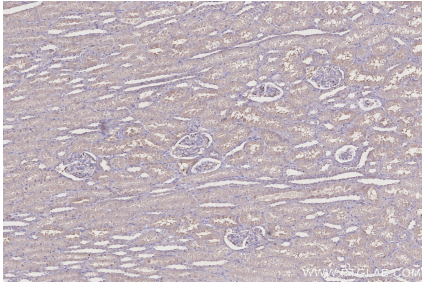
Background

DCUN1D2 (DCN1-like protein 2), also known as DCNL2. It is predicted to be located in the cytoplasm and nucleus. Mostly expressed in liver, kidney and brain. Contributes to the neddylation of all cullins by transferring NEDD8 from N-terminally acetylated NEDD8-conjugating E2s enzyme to different cullin C-terminal domain-RBX complexes and plays an essential role in the regulation of SCF (SKP1-CUL1-F-box protein)-type complexes activity.

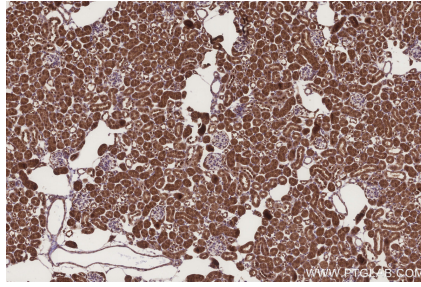
Synonyms

C13orf17, DCUN1L2

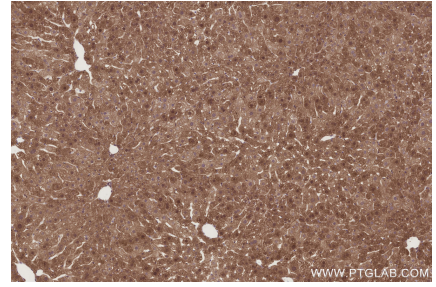
Selected Validation Data



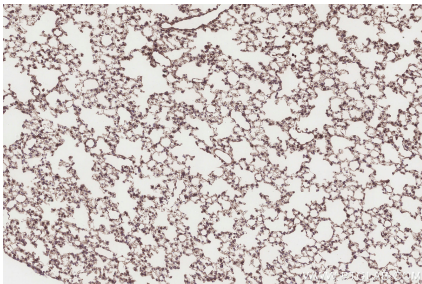
Immunohistochemical analysis of paraffin-embedded human kidney tissue slide using KHC3272 (DCUN1D2 IHC Kit).



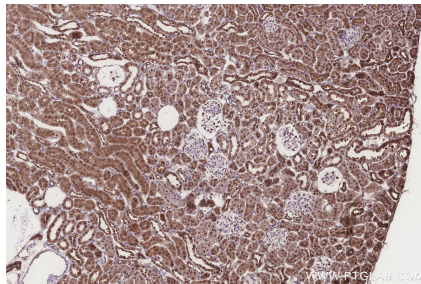
Immunohistochemical analysis of paraffin-embedded mouse kidney tissue slide using KHC3272 (DCUN1D2 IHC Kit).



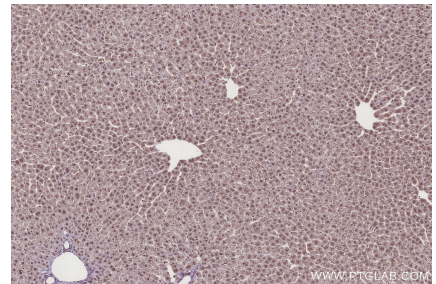
Immunohistochemical analysis of paraffin-embedded mouse liver tissue slide using KHC3272 (DCUN1D2 IHC Kit).



Immunohistochemical analysis of paraffin-embedded mouse lung tissue slide using KHC3272 (DCUN1D2 IHC Kit).



Immunohistochemical analysis of paraffin-embedded rat kidney tissue slide using KHC3272 (DCUN1D2 IHC Kit).



Immunohistochemical analysis of paraffin-embedded rat liver tissue slide using KHC3272 (DCUN1D2 IHC Kit).