

IHCeasy[®] C19orf63 Ready-To-Use IHC Kit

Catalog Number: **KHC3264**

General Information

Sample type:
FFPE tissue

Cited sample type:

Reactivity:
Human, Mouse, Rat

Cited Reactivity:

Assay type:
Immunohistochemistry

Primary antibody type:
Rabbit Polyclonal

Secondary antibody type:
Polymer-HRP-Goat anti-Rabbit

Kit Component

Component	Size	Concentration
Antigen Retrieval Buffer	100 mL	50×
Washing Buffer	100 mL ×2	20×
Blocking Buffer	5 mL	RTU
Primary Antibody	5 mL	RTU
Secondary Antibody	5 mL	RTU
Chromogen Component A	0.2 mL	RTU
Chromogen Component B	4 mL	RTU
Signal Enhancer	5 mL	RTU
Counter Staining Reagent	5 mL	RTU
Mounting Media	5 mL	RTU
Control Slide	1 slide (Optional)	FFPE
Datasheet	1 Copy	
Manual	1 Copy	

Storage Instructions

All the reagents are stored at 2-8°C. The kit is stable for 6 months from the date of receipt.

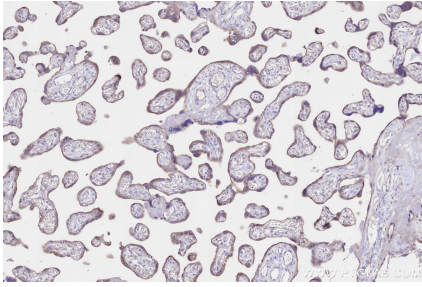
Background

EMC10 (Endoplasmic Reticulum Membrane Protein Complex Subunit 10) is one of the key components of the highly conserved endoplasmic reticulum membrane protein complex (EMC). The core function of this complex is to act as an insertase and chaperone in the endoplasmic reticulum, assisting in the correct folding, assembly, and membrane integration of membrane proteins, and preventing the aggregation of misfolded proteins. Studies have shown that EMC10 plays a dual role in cells: within the cell, it ensures the biogenesis of important membrane proteins such as G protein-coupled receptors (GPCRs); moreover, it can be secreted outside the cell (referred to as sEMC10), where it acts as a novel signaling molecule to activate the hypothalamic-pituitary axis, regulating energy metabolism and body weight in the body, and is closely related to obesity and metabolic diseases.

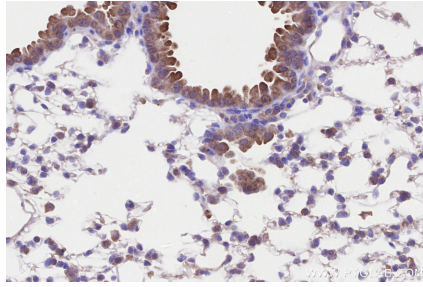
Synonyms

EMC10, ER Membrane Protein Complex Subunit 10, Hematopoietic signal peptide-containing membrane domain-containing protein 1, HSM1, HSS1

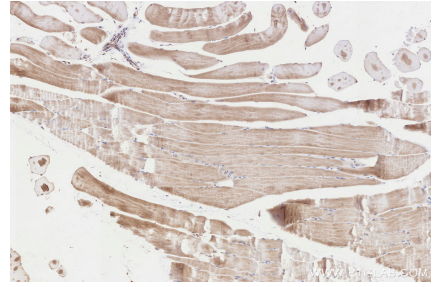
Selected Validation Data



Immunohistochemical analysis of paraffin-embedded human placenta tissue slide using KHC3264 (C19orf63 IHC Kit).



Immunohistochemical analysis of paraffin-embedded mouse lung tissue slide using KHC3264 (C19orf63 IHC Kit).



Immunohistochemical analysis of paraffin-embedded rat skeletal muscle tissue slide using KHC3264 (C19orf63 IHC Kit).