

IHCeasy[®] CPTP Ready-To-Use IHC Kit

Catalog Number: **KHC3263**

General Information

Sample type:
FFPE tissue

Cited sample type:

Reactivity:
Human, Mouse, Rat

Cited Reactivity:

Assay type:
Immunohistochemistry

Primary antibody type:
Rabbit Polyclonal

Secondary antibody type:
Polymer-HRP-Goat anti-Rabbit

Kit Component

Component	Size	Concentration
Antigen Retrieval Buffer	100 mL	50×
Washing Buffer	100 mL ×2	20×
Blocking Buffer	5 mL	RTU
Primary Antibody	5 mL	RTU
Secondary Antibody	5 mL	RTU
Chromogen Component A	0.2 mL	RTU
Chromogen Component B	4 mL	RTU
Signal Enhancer	5 mL	RTU
Counter Staining Reagent	5 mL	RTU
Mounting Media	5 mL	RTU
Control Slide	1 slide (Optional)	FFPE
Datasheet	1 Copy	
Manual	1 Copy	

Storage Instructions

All the reagents are stored at 2-8°C. The kit is stable for 6 months from the date of receipt.

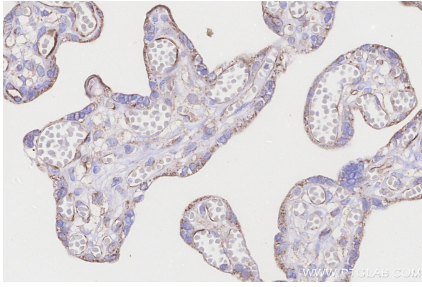
Background

Ceramide-1-phosphate transfer protein (CPTP) is a member of the glycolipid transfer protein (GLTP) family. It is the only identified protein in mammals that can selectively transport ceramide-1-phosphate (C1P) through a non-vesicular mechanism. CPTP plays a crucial role in various biological processes, including cell proliferation, migration, and invasion. It is involved in the regulation of lipid metabolism, particularly in the context of ceramide-1-phosphate, which is a bioactive sphingolipid with roles in cell signaling, inflammation, and autophagy.

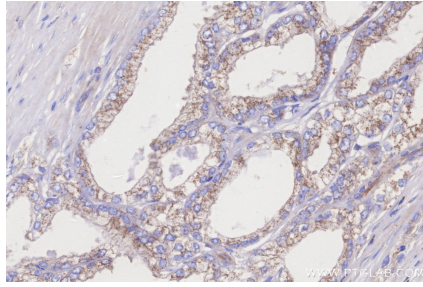
Synonyms

Ceramide-1-phosphate transfer protein, GLTP domain-containing protein 1, GLTPD1, Glycolipid transfer protein domain-containing protein 1

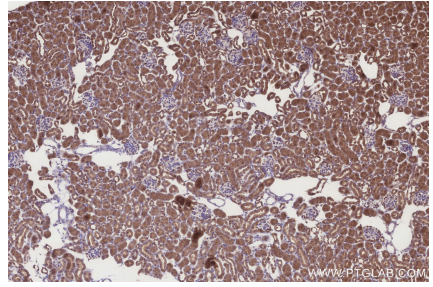
Selected Validation Data



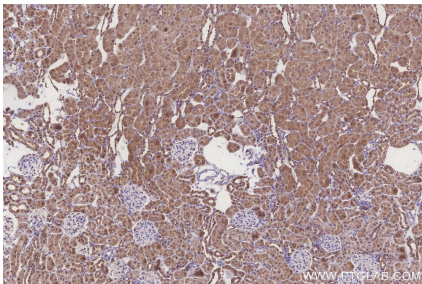
Immunohistochemical analysis of paraffin-embedded human placenta tissue slide using KHC3263 (CPTP IHC Kit).



Immunohistochemical analysis of paraffin-embedded human prostate cancer tissue slide using KHC3263 (CPTP IHC Kit).



Immunohistochemical analysis of paraffin-embedded mouse kidney tissue slide using KHC3263 (CPTP IHC Kit).



Immunohistochemical analysis of paraffin-embedded rat kidney tissue slide using KHC3263 (CPTP IHC Kit).