

IHCeasy[®] NDUFS1 Ready-To-Use IHC Kit

Catalog Number: **KHC3242**

General Information

Sample type:
FFPE tissue

Cited sample type:

Reactivity:
Human, Mouse, Rat

Cited Reactivity:

Assay type:
Immunohistochemistry

Primary antibody type:
Mouse Monoclonal

Secondary antibody type:
Polymer-HRP-Goat anti-Mouse

Kit Component

Component	Size	Concentration
Antigen Retrieval Buffer	100 mL	50×
Washing Buffer	100 mL ×2	20×
Blocking Buffer	5 mL	RTU
Primary Antibody	5 mL	RTU
Secondary Antibody	5 mL	RTU
Chromogen Component A	0.2 mL	RTU
Chromogen Component B	4 mL	RTU
Signal Enhancer	5 mL	RTU
Counter Staining Reagent	5 mL	RTU
Mounting Media	5 mL	RTU
Control Slide	1 slide (Optional)	FFPE
Datasheet	1 Copy	
Manual	1 Copy	

Storage Instructions

All the reagents are stored at 2-8°C. The kit is stable for 6 months from the date of receipt.

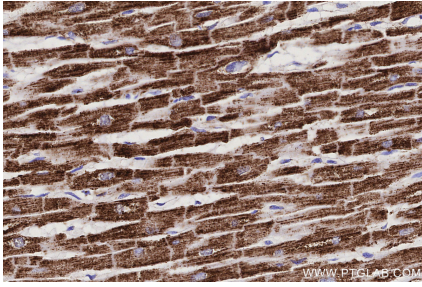
Background

The multisubunit NADH:ubiquinone oxidoreductase (75 kDa subunit, mitochondrial)(NDUFS1) is the first enzyme complex in the electron transport chain of mitochondria. It is also named as Complex I-75kD. By use of chaotropic agents, complex I can be fragmented into 3 different fractions: a flavoprotein fraction, an iron-sulfur protein (IP) fraction, and a hydrophobic protein (HP) fraction. NDUFS1 is the largest subunit of complex I and it is a component of the iron-sulfur (IP) fragment of the enzyme.

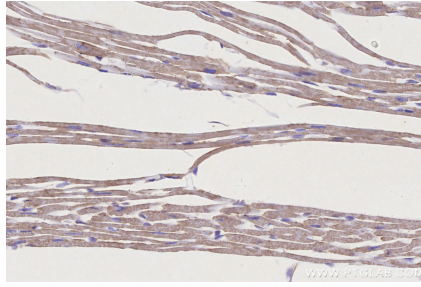
Synonyms

CI 75Kd, CI-75kD, Complex I 75kD, Complex I-75kD, EC:7.1.1.2

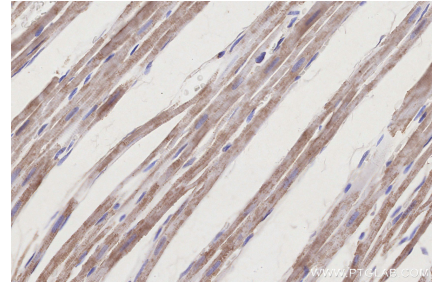
Selected Validation Data



Immunohistochemical analysis of paraffin-embedded human heart tissue slide using KHC3242 (NDUFS1 IHC Kit).



Immunohistochemical analysis of paraffin-embedded mouse heart tissue slide using KHC3242 (NDUFS1 IHC Kit).



Immunohistochemical analysis of paraffin-embedded rat heart tissue slide using KHC3242 (NDUFS1 IHC Kit).