

IHCeasy[®] RPL5 Ready-To-Use IHC Kit

Catalog Number: **KHC3212**

General Information

Sample type:
FFPE tissue
Cited sample type:
Reactivity:
Human, Mouse, Rat
Cited Reactivity:

Assay type:
Immunohistochemistry
Primary antibody type:
Rabbit Recombinant
Secondary antibody type:
Polymer-HRP-Goat anti-Rabbit

Kit Component

Component	Size	Concentration
Antigen Retrieval Buffer	100 mL	50×
Washing Buffer	100 mL ×2	20×
Blocking Buffer	5 mL	RTU
Primary Antibody	5 mL	RTU
Secondary Antibody	5 mL	RTU
Chromogen Component A	0.2 mL	RTU
Chromogen Component B	4 mL	RTU
Signal Enhancer	5 mL	RTU
Counter Staining Reagent	5 mL	RTU
Mounting Media	5 mL	RTU
Control Slide	1 slide (Optional)	FFPE
Datasheet	1 Copy	
Manual	1 Copy	

Storage Instructions

All the reagents are stored at 2-8°C. The kit is stable for 6 months from the date of receipt.

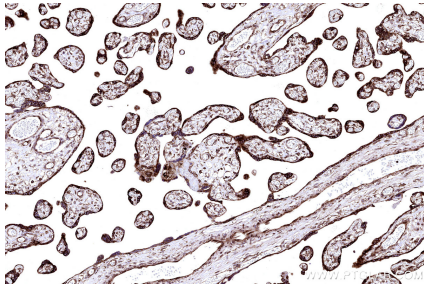
Background

RPL5 (Ribosomal Protein L5) is a crucial component of the 60S ribosomal subunit, playing a significant role in ribosome biogenesis and function. It is required for rRNA maturation and the formation of the 60S ribosomal subunits. Defects or mutations in RPL5 are associated with Diamond-Blackfan anemia (DBA), a congenital disorder characterized by red blood cell aplasia.

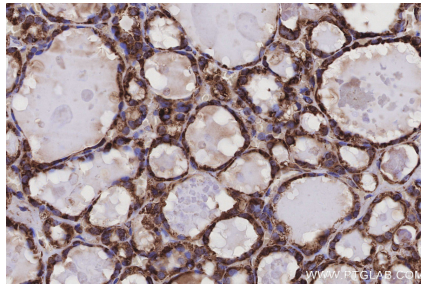
Synonyms

60S ribosomal protein L5, DBA6, Large ribosomal subunit protein uL18, MSTP030, ribosomal protein L5

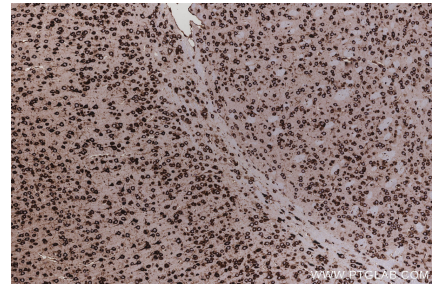
Selected Validation Data



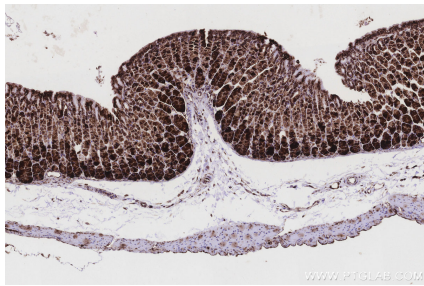
Immunohistochemical analysis of paraffin-embedded human placenta tissue slide using KHC3212 (RPL5 IHC Kit).



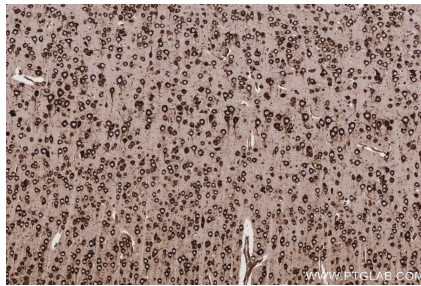
Immunohistochemical analysis of paraffin-embedded human thyroid cancer tissue slide using KHC3212 (RPL5 IHC Kit).



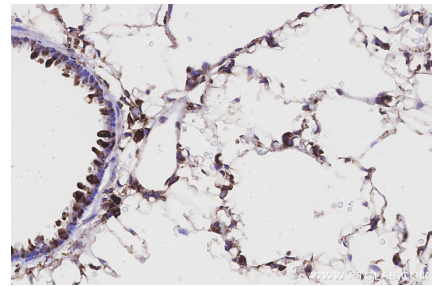
Immunohistochemical analysis of paraffin-embedded mouse brain tissue slide using KHC3212 (RPL5 IHC Kit).



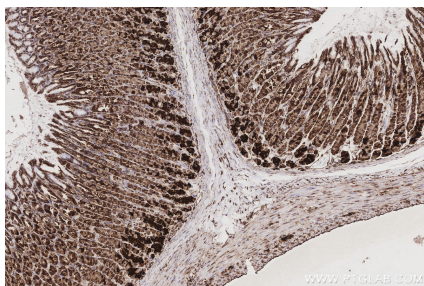
Immunohistochemical analysis of paraffin-embedded mouse stomach tissue slide using KHC3212 (RPL5 IHC Kit).



Immunohistochemical analysis of paraffin-embedded rat brain tissue slide using KHC3212 (RPL5 IHC Kit).



Immunohistochemical analysis of paraffin-embedded rat lung tissue slide using KHC3212 (RPL5 IHC Kit).



Immunohistochemical analysis of paraffin-embedded rat stomach tissue slide using KHC3212 (RPL5 IHC Kit).