

IHCeasy[®] ACADL Ready-To-Use IHC Kit

Catalog Number: **KHC3205**

General Information

Sample type:
FFPE tissue
Cited sample type:
Reactivity:
Human, Mouse, Rat
Cited Reactivity:

Assay type:
Immunohistochemistry
Primary antibody type:
Rabbit Polyclonal
Secondary antibody type:
Polymer-HRP-Goat anti-Rabbit

Kit Component

Component	Size	Concentration
Antigen Retrieval Buffer	100 mL	50×
Washing Buffer	100 mL ×2	20×
Blocking Buffer	5 mL	RTU
Primary Antibody	5 mL	RTU
Secondary Antibody	5 mL	RTU
Chromogen Component A	0.2 mL	RTU
Chromogen Component B	4 mL	RTU
Signal Enhancer	5 mL	RTU
Counter Staining Reagent	5 mL	RTU
Mounting Media	5 mL	RTU
Control Slide	1 slide (Optional)	FFPE
Datasheet	1 Copy	
Manual	1 Copy	

Storage Instructions

All the reagents are stored at 2-8°C. The kit is stable for 6 months from the date of receipt.

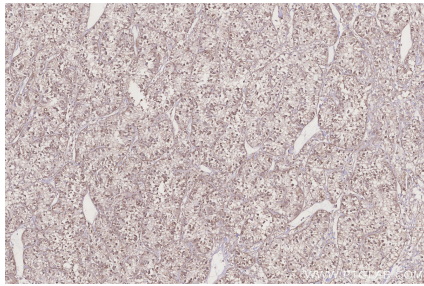
Background

ACADL(Long-chain specific acyl-CoA dehydrogenase, mitochondrial) is also named as LCAD and belongs to the acyl-CoA dehydrogenase family. It catalyzes the first reaction of the mitochondrial β -oxidation of fatty acids and is synthesized in the cytosol as a precursor that is larger than its mature form. Defects in ACADL are a cause of acyl-CoA dehydrogenase very long-chain deficiency (ACADVLD).

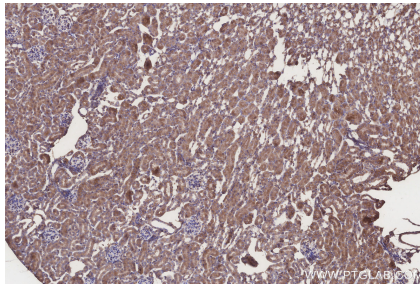
Synonyms

ACAD4, EC:1.3.8.8, LCAD, Long-chain specific acyl-CoA dehydrogenase, mitochondrial

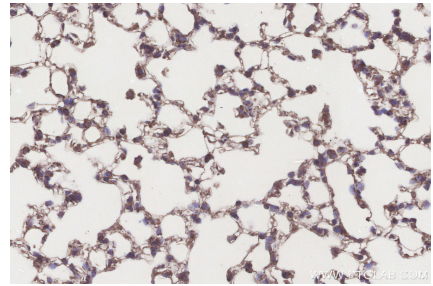
Selected Validation Data



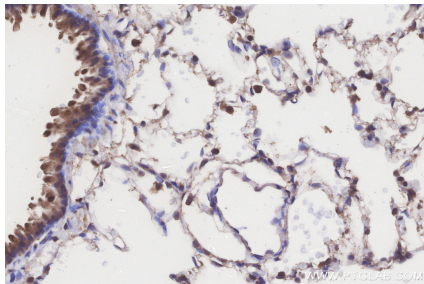
Immunohistochemical analysis of paraffin-embedded human renal cell carcinoma tissue slide using KHC3205 (ACADL IHC Kit).



Immunohistochemical analysis of paraffin-embedded mouse kidney tissue slide using KHC3205 (ACADL IHC Kit).



Immunohistochemical analysis of paraffin-embedded mouse lung tissue slide using KHC3205 (ACADL IHC Kit).



Immunohistochemical analysis of paraffin-embedded rat lung tissue slide using KHC3205 (ACADL IHC Kit).