

# IHCeasy<sup>®</sup> IGFBP5 Ready-To-Use IHC Kit

Catalog Number: **KHC3201**

## General Information

Sample type:  
FFPE tissue  
Cited sample type:  
Reactivity:  
Human, Mouse, Rat  
Cited Reactivity:

Assay type:  
Immunohistochemistry  
Primary antibody type:  
Rabbit Polyclonal  
Secondary antibody type:  
Polymer-HRP-Goat anti-Rabbit

## Kit Component

Component	Size	Concentration
Antigen Retrieval Buffer	100 mL	50×
Washing Buffer	100 mL ×2	20×
Blocking Buffer	5 mL	RTU
Primary Antibody	5 mL	RTU
Secondary Antibody	5 mL	RTU
Chromogen Component A	0.2 mL	RTU
Chromogen Component B	4 mL	RTU
Signal Enhancer	5 mL	RTU
Counter Staining Reagent	5 mL	RTU
Mounting Media	5 mL	RTU
Control Slide	1 slide (Optional)	FFPE
Datasheet	1 Copy	
Manual	1 Copy	

## Storage Instructions

All the reagents are stored at 2-8°C. The kit is stable for 6 months from the date of receipt.

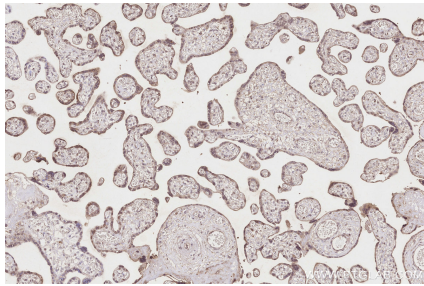
## Background

IGFBP5, also named as IBP5, prolong the half-life of the IGFs and have been shown to either inhibit or stimulate the growth promoting effects of the IGFs on cell culture. It alter the interaction of IGFs with their cell surface receptors. Primary antibody in this kit is specific to IGFBP5.

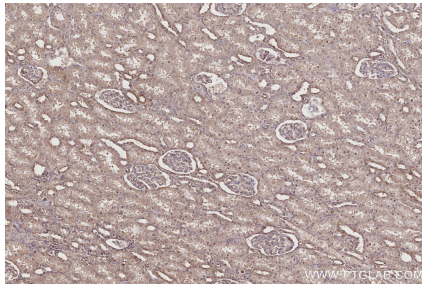
## Synonyms

IBP 5, IBP5, IBP-5, IGF binding protein 5, IGF BP5

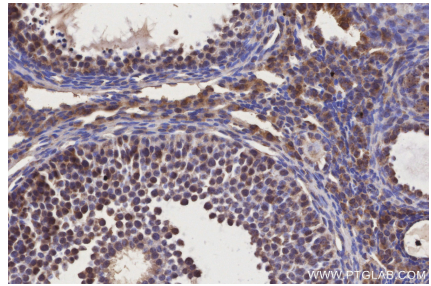
## Selected Validation Data



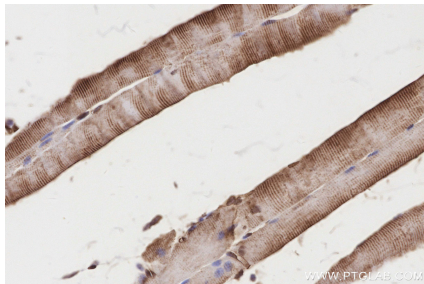
Immunohistochemical analysis of paraffin-embedded human placenta tissue slide using KHC3201 (IGFBP5 IHC Kit).



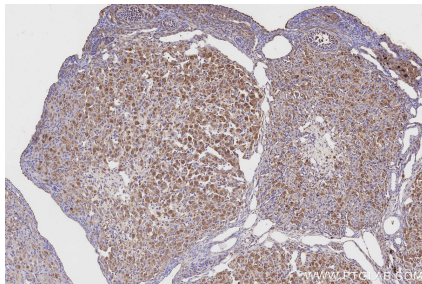
Immunohistochemical analysis of paraffin-embedded human kidney tissue slide using KHC3201 (IGFBP5 IHC Kit).



Immunohistochemical analysis of paraffin-embedded mouse ovary tissue slide using KHC3201 (IGFBP5 IHC Kit).



Immunohistochemical analysis of paraffin-embedded mouse skeletal muscle tissue slide using KHC3201 (IGFBP5 IHC Kit).



Immunohistochemical analysis of paraffin-embedded rat ovary tissue slide using KHC3201 (IGFBP5 IHC Kit).