

IHCeasy[®] ITIH1 Ready-To-Use IHC Kit

Catalog Number: **KHC3196**

General Information

Sample type:
FFPE tissue

Cited sample type:

Reactivity:
Human, Mouse

Cited Reactivity:

Assay type:
Immunohistochemistry

Primary antibody type:
Rabbit Polyclonal

Secondary antibody type:
Polymer-HRP-Goat anti-Rabbit

Kit Component

Component	Size	Concentration
Antigen Retrieval Buffer	100 mL	50×
Washing Buffer	100 mL ×2	20×
Blocking Buffer	5 mL	RTU
Primary Antibody	5 mL	RTU
Secondary Antibody	5 mL	RTU
Chromogen Component A	0.2 mL	RTU
Chromogen Component B	4 mL	RTU
Signal Enhancer	5 mL	RTU
Counter Staining Reagent	5 mL	RTU
Mounting Media	5 mL	RTU
Control Slide	1 slide (Optional)	FFPE
Datasheet	1 Copy	
Manual	1 Copy	

Storage Instructions

All the reagents are stored at 2-8°C. The kit is stable for 6 months from the date of receipt.

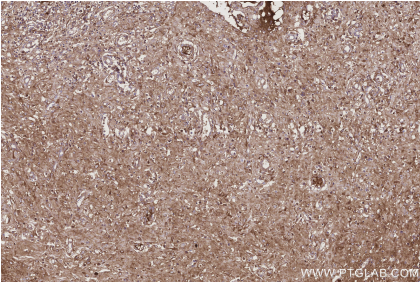
Background

ITIH1 (inter-alpha-trypsin inhibitor heavy chain 1), also named as IGHEP1 and SHAP. It is a key component of the inter-alpha-trypsin inhibitor (ITI) family, which plays a crucial role in extracellular matrix (ECM) stabilization and inflammation regulation. ITIH1 forms a complex with bikunin (a light chain) and other heavy chains (ITIH2, ITIH3, ITIH4), contributing to the stabilization of hyaluronan-rich matrices.

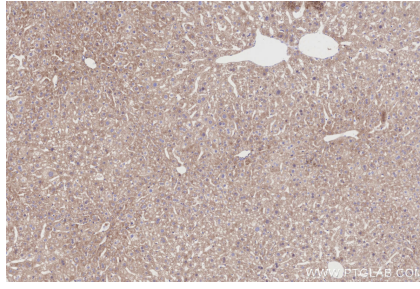
Synonyms

Inter-alpha-inhibitor heavy chain 1, Inter-alpha-trypsin inhibitor complex component III, Inter-alpha-trypsin inhibitor heavy chain H1, Serum-derived hyaluronan-associated protein

Selected Validation Data



Immunohistochemical analysis of paraffin-embedded human colon cancer tissue slide using KHC3196 (ITIH1 IHC Kit).



Immunohistochemical analysis of paraffin-embedded mouse liver tissue slide using KHC3196 (ITIH1 IHC Kit).