

IHCeasy[®] ALDH1L1 Ready-To-Use IHC Kit

Catalog Number: **KHC3151**

General Information

Sample type:
FFPE tissue
Cited sample type:
Reactivity:
Human, Mouse, Rat
Cited Reactivity:

Assay type:
Immunohistochemistry
Primary antibody type:
Rabbit Polyclonal
Secondary antibody type:
Polymer-HRP-Goat anti-Rabbit

Kit Component

Component	Size	Concentration
Antigen Retrieval Buffer	100 mL	50×
Washing Buffer	100 mL ×2	20×
Blocking Buffer	5 mL	RTU
Primary Antibody	5 mL	RTU
Secondary Antibody	5 mL	RTU
Chromogen Component A	0.2 mL	RTU
Chromogen Component B	4 mL	RTU
Signal Enhancer	5 mL	RTU
Counter Staining Reagent	5 mL	RTU
Mounting Media	5 mL	RTU
Control Slide	1 slide (Optional)	FFPE
Datasheet	1 Copy	
Manual	1 Copy	

Storage Instructions

All the reagents are stored at 2-8°C. The kit is stable for 6 months from the date of receipt.

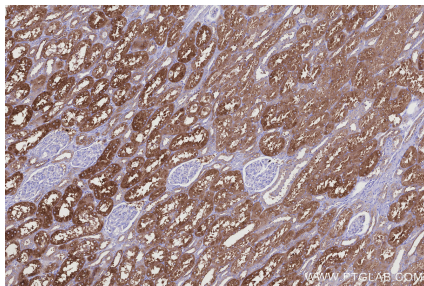
Background

Aldehyde dehydrogenase 1 family member L1 (ALDH1L1), belongs to the aldehyde dehydrogenase family of proteins and is responsible for formate oxidation in vivo. Loss of ALDH1L1 is associated with decreased apoptosis, increased cell motility, and cancer progression. ALDH1L1 catalyzes the conversion of 10-formyltetrahydrofolate, nicotinamide adenine dinucleotide phosphate (NADP⁺), and water to tetrahydrofolate, NADPH, and carbon dioxide.

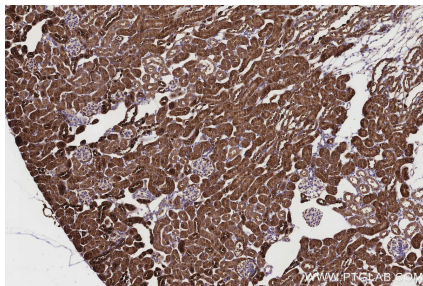
Synonyms

10 FTHFDH, 10-FTHFDH, ALDH1L 1, Cytosolic 10-formyltetrahydrofolate dehydrogenase, EC:1.5.1.6

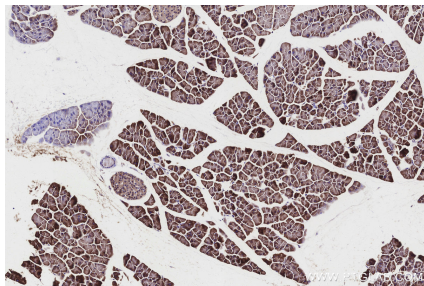
Selected Validation Data



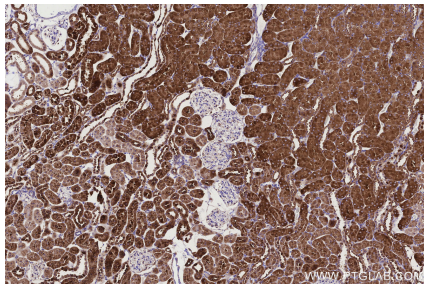
Immunohistochemical analysis of paraffin-embedded human kidney tissue slide using KHC3151 (ALDH1L1 IHC Kit).



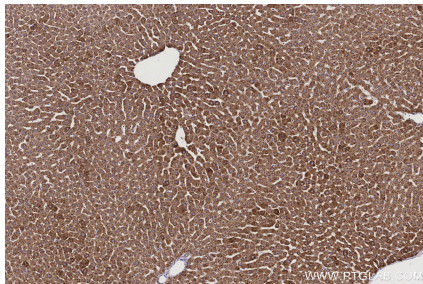
Immunohistochemical analysis of paraffin-embedded mouse kidney tissue slide using KHC3151 (ALDH1L1 IHC Kit).



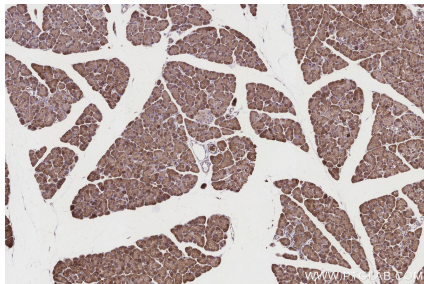
Immunohistochemical analysis of paraffin-embedded mouse pancreas tissue slide using KHC3151 (ALDH1L1 IHC Kit).



Immunohistochemical analysis of paraffin-embedded rat kidney tissue slide using KHC3151 (ALDH1L1 IHC Kit).



Immunohistochemical analysis of paraffin-embedded rat liver tissue slide using KHC3151 (ALDH1L1 IHC Kit).



Immunohistochemical analysis of paraffin-embedded rat pancreas tissue slide using KHC3151 (ALDH1L1 IHC Kit).