

IHCeasy[®] ARHGAP23 Ready-To-Use IHC Kit

Catalog Number: **KHC3130**

General Information

Sample type:
FFPE tissue

Cited sample type:

Reactivity:
Human, Mouse

Cited Reactivity:

Assay type:
Immunohistochemistry

Primary antibody type:
Rabbit Polyclonal

Secondary antibody type:
Polymer-HRP-Goat anti-Rabbit

Kit Component

Component	Size	Concentration
Antigen Retrieval Buffer	100 mL	50×
Washing Buffer	100 mL × 2	20×
Blocking Buffer	5 mL	RTU
Primary Antibody	5 mL	RTU
Secondary Antibody	5 mL	RTU
Chromogen Component A	0.2 mL	RTU
Chromogen Component B	4 mL	RTU
Signal Enhancer	5 mL	RTU
Counter Staining Reagent	5 mL	RTU
Mounting Media	5 mL	RTU
Control Slide	1 slide (Optional)	FFPE
Datasheet	1 Copy	
Manual	1 Copy	

Storage Instructions

All the reagents are stored at 2-8°C. The kit is stable for 6 months from the date of receipt.

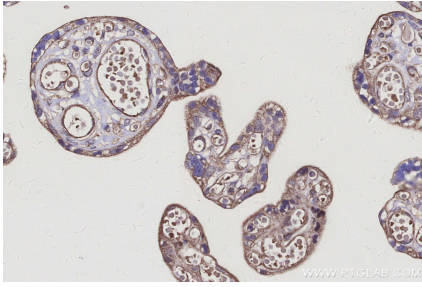
Background

ARHGAP23 (Rho GTPase Activating Protein 23) belongs to the family of Rho GTPase activating proteins. The protein functions as a GTPase-activating factor by converting Rho class GTPases into their inactive GDP-bound state. ARHGAP23 is involved in the Rho GTPase signaling pathway, affecting processes such as cytoskeletal reorganization, cell migration, and cell proliferation. In non-small cell lung cancer, the expression of ARHGAP23 is associated with tumor immune infiltration and prognosis, and its role in tumor development has attracted attention. Mutations in this gene are related to a variety of diseases, including certain types of cancer and neurological disorders.

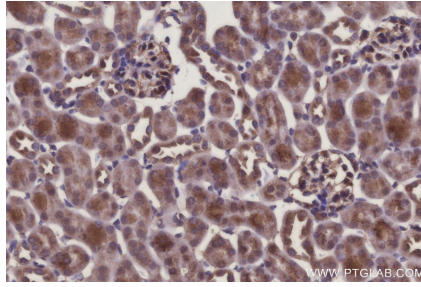
Synonyms

KIAA1501, Rho GTPase Activating Protein 23, Rho GTPase-activating protein 23, Rho-type GTPase-activating protein 23

Selected Validation Data



Immunohistochemical analysis of paraffin-embedded human placenta tissue slide using KHC3130 (ARHGAP23 IHC Kit).



Immunohistochemical analysis of paraffin-embedded mouse kidney tissue slide using KHC3130 (ARHGAP23 IHC Kit).