

IHCeasy[®] KIAA1468 Ready-To-Use IHC Kit

Catalog Number: **KHC3119**

General Information

Sample type:
FFPE tissue
Cited sample type:
Reactivity:
Human, Rat
Cited Reactivity:

Assay type:
Immunohistochemistry
Primary antibody type:
Rabbit Polyclonal
Secondary antibody type:
Polymer-HRP-Goat anti-Rabbit

Kit Component

Component	Size	Concentration
Antigen Retrieval Buffer	100 mL	50×
Washing Buffer	100 mL ×2	20×
Blocking Buffer	5 mL	RTU
Primary Antibody	5 mL	RTU
Secondary Antibody	5 mL	RTU
Chromogen Component A	0.2 mL	RTU
Chromogen Component B	4 mL	RTU
Signal Enhancer	5 mL	RTU
Counter Staining Reagent	5 mL	RTU
Mounting Media	5 mL	RTU
Control Slide	1 slide (Optional)	FFPE
Datasheet	1 Copy	
Manual	1 Copy	

Storage Instructions

All the reagents are stored at 2-8°C. The kit is stable for 6 months from the date of receipt.

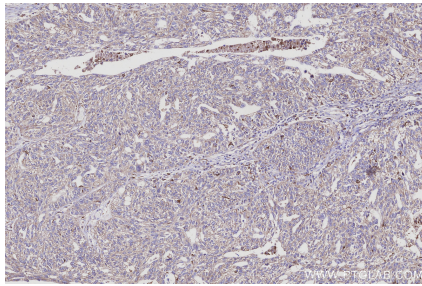
Background

RELCH/KIAA1468, which is a newly identified Rab11 effector protein, tethers the recycling endosomes (REs) and trans-Golgi network (TGN) membranes by binding TGN-localized oxysterol-binding protein (OSBP) and promotes OSBP-dependent nonvesicular cholesterol transport from REs to the TGN.

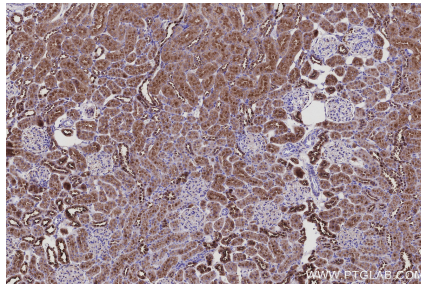
Synonyms

RELCH, HsT3308, HsT885, LisH domain and HEAT repeat-containing protein KIAA1468, RAB11 binding and LisH domain, coiled-coil and HEAT repeat-containing

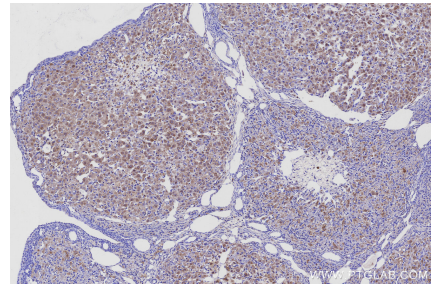
Selected Validation Data



Immunohistochemical analysis of paraffin-embedded human ovary cancer tissue slide using KHC3119 (KIAA1468 IHC Kit).



Immunohistochemical analysis of paraffin-embedded rat kidney tissue slide using KHC3119 (KIAA1468 IHC Kit).



Immunohistochemical analysis of paraffin-embedded rat ovary tissue slide using KHC3119 (KIAA1468 IHC Kit).