

# IHCeasy<sup>®</sup> NACA Ready-To-Use IHC Kit

Catalog Number: **KHC3098**

## General Information

**Sample type:**  
FFPE tissue

**Cited sample type:**

**Reactivity:**  
Human, Mouse, Rat

**Cited Reactivity:**

**Assay type:**  
Immunohistochemistry

**Primary antibody type:**  
Rabbit Polyclonal

**Secondary antibody type:**  
Polymer-HRP-Goat anti-Rabbit

## Kit Component

Component	Size	Concentration
Antigen Retrieval Buffer	100 mL	50×
Washing Buffer	100 mL × 2	20×
Blocking Buffer	5 mL	RTU
Primary Antibody	5 mL	RTU
Secondary Antibody	5 mL	RTU
Chromogen Component A	0.2 mL	RTU
Chromogen Component B	4 mL	RTU
Signal Enhancer	5 mL	RTU
Counter Staining Reagent	5 mL	RTU
Mounting Media	5 mL	RTU
Control Slide	1 slide (Optional)	FFPE
Datasheet	1 Copy	
Manual	1 Copy	

## Storage Instructions

All the reagents are stored at 2-8°C. The kit is stable for 6 months from the date of receipt.

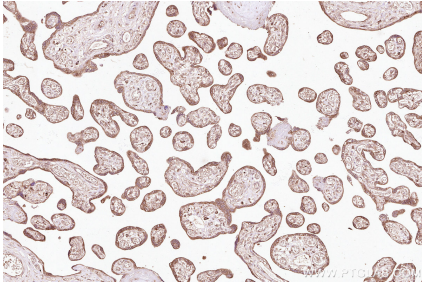
## Background

NACA (NAC-alpha), or Nascent polypeptide-associated complex subunit alpha, is a component of the nascent polypeptide-associated complex (NAC). NACA is a key subunit of the NAC complex that assists in the proper folding of newly synthesized proteins and prevents the formation of harmful protein aggregates, playing a vital role in cellular protein quality control and stress response mechanisms.

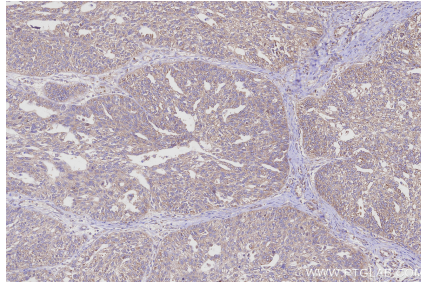
## Synonyms

Alpha NAC, Hom s 2, HSD48, NAC alpha, NACA1

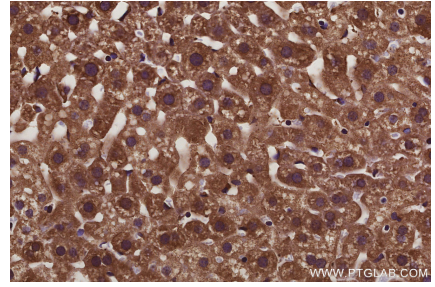
## Selected Validation Data



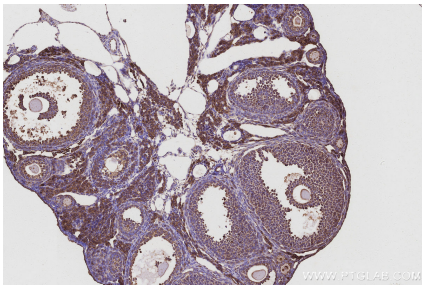
Immunohistochemical analysis of paraffin-embedded human placenta tissue slide using KHC3098 (NACA IHC Kit).



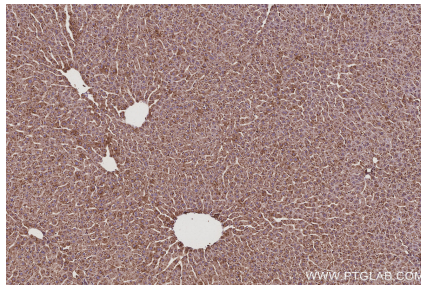
Immunohistochemical analysis of paraffin-embedded human ovary cancer tissue slide using KHC3098 (NACA IHC Kit).



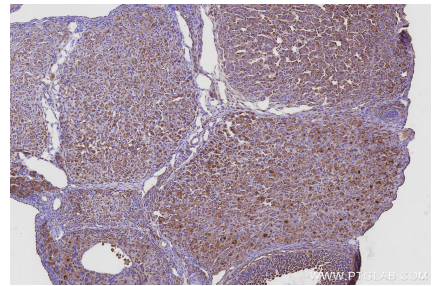
Immunohistochemical analysis of paraffin-embedded mouse liver tissue slide using KHC3098 (NACA IHC Kit).



Immunohistochemical analysis of paraffin-embedded mouse ovary tissue slide using KHC3098 (NACA IHC Kit).



Immunohistochemical analysis of paraffin-embedded rat liver tissue slide using KHC3098 (NACA IHC Kit).



Immunohistochemical analysis of paraffin-embedded rat ovary tissue slide using KHC3098 (NACA IHC Kit).