

# IHCeasy<sup>®</sup> SLC4A7/NBCn1 Ready-To-Use IHC Kit

Catalog Number: **KHC3094**

## General Information

Sample type:  
FFPE tissue  
Cited sample type:  
Reactivity:  
Human, Mouse, Rat  
Cited Reactivity:

Assay type:  
Immunohistochemistry  
Primary antibody type:  
Rabbit Polyclonal  
Secondary antibody type:  
Polymer-HRP-Goat anti-Rabbit

## Kit Component

Component	Size	Concentration
Antigen Retrieval Buffer	100 mL	50×
Washing Buffer	100 mL ×2	20×
Blocking Buffer	5 mL	RTU
Primary Antibody	5 mL	RTU
Secondary Antibody	5 mL	RTU
Chromogen Component A	0.2 mL	RTU
Chromogen Component B	4 mL	RTU
Signal Enhancer	5 mL	RTU
Counter Staining Reagent	5 mL	RTU
Mounting Media	5 mL	RTU
Control Slide	1 slide (Optional)	FFPE
Datasheet	1 Copy	
Manual	1 Copy	

## Storage Instructions

All the reagents are stored at 2-8°C. The kit is stable for 6 months from the date of receipt.

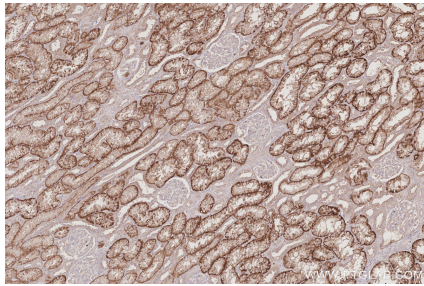
## Background

SLC4A7 also known as NBCn1, NBC3, NBC2, is an electroneutral Na<sup>(+)</sup>/HCO<sub>3</sub><sup>(-)</sup> cotransporter. SLC4A7 mediates the coupled movement of sodium and bicarbonate ions across the plasma membrane. SLC4A7 plays a key role in macrophage acidification, mediating bicarbonate import into the cytoplasm which is crucial for net acid extrusion and maintenance of cytoplasmic pH during phagocytosis. SLC4A7 is expressed in testis, spleen, and retina. SLC4A7 may be a major regulator of extracellular pH of retina where light stimulation produces an extracellular alkalization and may contribute as a solute transporter to the prevention of retinal detachment.

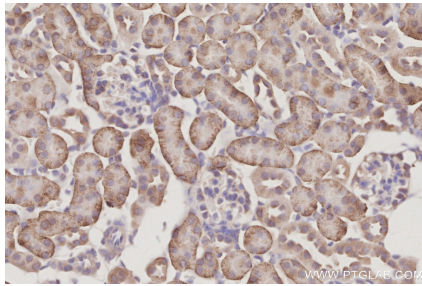
## Synonyms

NBCn1, SLC4A7, NBC2, NBC3

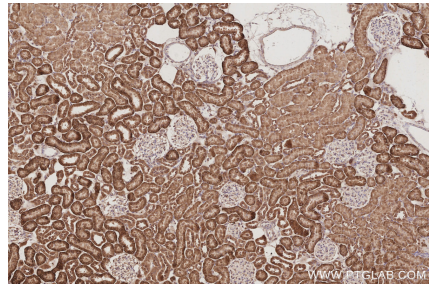
## Selected Validation Data



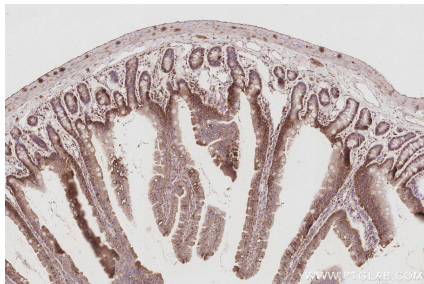
Immunohistochemical analysis of paraffin-embedded human kidney tissue slide using KHC3094 (SLC4A7/NBCn1 IHC Kit).



Immunohistochemical analysis of paraffin-embedded mouse kidney tissue slide using KHC3094 (SLC4A7/NBCn1 IHC Kit).



Immunohistochemical analysis of paraffin-embedded rat kidney tissue slide using KHC3094 (SLC4A7/NBCn1 IHC Kit).



Immunohistochemical analysis of paraffin-embedded rat small intestine tissue slide using KHC3094 (SLC4A7/NBCn1 IHC Kit).