

IHCeasy[®] CEP83 Ready-To-Use IHC Kit

Catalog Number: **KHC3077**

General Information

Sample type:
FFPE tissue
Cited sample type:
Reactivity:
Human, Rat
Cited Reactivity:

Assay type:
Immunohistochemistry
Primary antibody type:
Rabbit Polyclonal
Secondary antibody type:
Polymer-HRP-Goat anti-Rabbit

Kit Component

Component	Size	Concentration
Antigen Retrieval Buffer	100 mL	50×
Washing Buffer	100 mL ×2	20×
Blocking Buffer	5 mL	RTU
Primary Antibody	5 mL	RTU
Secondary Antibody	5 mL	RTU
Chromogen Component A	0.2 mL	RTU
Chromogen Component B	4 mL	RTU
Signal Enhancer	5 mL	RTU
Counter Staining Reagent	5 mL	RTU
Mounting Media	5 mL	RTU
Control Slide	1 slide (Optional)	FFPE
Datasheet	1 Copy	
Manual	1 Copy	

Storage Instructions

All the reagents are stored at 2-8°C. The kit is stable for 6 months from the date of receipt.

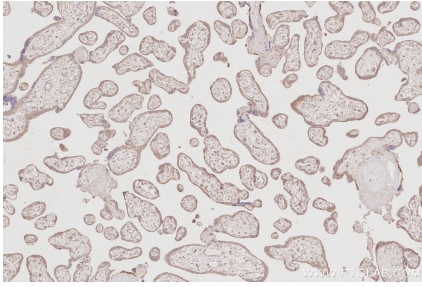
Background

CEP83 (centrosomal protein), also known as CCDC41 (coiled-coil domain containing 41), is required for ciliary vesicle docking to the mother centriole. It is a key component of the centriolar distal appendages. CCDC41 may collaborate with IFT20 in the trafficking of ciliary membrane proteins from the Golgi complex to the cilium during the initiation of primary cilium assembly.

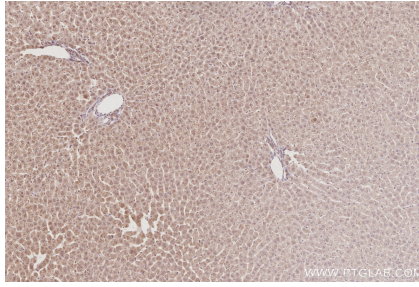
Synonyms

CCDC41, Centrosomal protein of 83 kDa, Coiled-coil domain-containing protein 41, NY REN 58, Renal carcinoma antigen NY-REN-58

Selected Validation Data



Immunohistochemical analysis of paraffin-embedded human placenta tissue slide using KHC3077 (CEP83 IHC Kit).



Immunohistochemical analysis of paraffin-embedded rat liver tissue slide using KHC3077 (CEP83 IHC Kit).