

IHCeasy[®] FARP1 Ready-To-Use IHC Kit

Catalog Number: **KHC3072**

General Information

Sample type:
FFPE tissue
Cited sample type:
Reactivity:
Human
Cited Reactivity:

Assay type:
Immunohistochemistry
Primary antibody type:
Rabbit Recombinant
Secondary antibody type:
Polymer-HRP-Goat anti-Rabbit

Kit Component

Component	Size	Concentration
Antigen Retrieval Buffer	100 mL	50×
Washing Buffer	100 mL ×2	20×
Blocking Buffer	5 mL	RTU
Primary Antibody	5 mL	RTU
Secondary Antibody	5 mL	RTU
Chromogen Component A	0.2 mL	RTU
Chromogen Component B	4 mL	RTU
Signal Enhancer	5 mL	RTU
Counter Staining Reagent	5 mL	RTU
Mounting Media	5 mL	RTU
Control Slide	1 slide (Optional)	FFPE
Datasheet	1 Copy	
Manual	1 Copy	

Storage Instructions

All the reagents are stored at 2-8°C. The kit is stable for 6 months from the date of receipt.

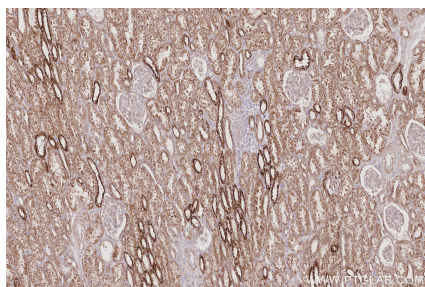
Background

FARP1 is a protein containing a FERM (4.2, ezrin, radixin, moesin) domain, a Dbl homology domain, and two pleckstrin homology domains. These domains are found in guanine nucleotide exchange factors and proteins that link the cytoskeleton to the cell membrane. The encoded protein functions in neurons to promote dendritic growth.

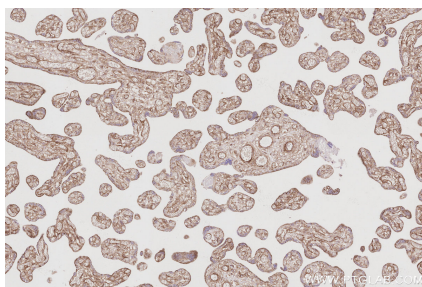
Synonyms

CDEP, Chondrocyte-derived ezrin-like protein, FERM, ARHGEF and pleckstrin domain-containing protein 1, FERM, RhoGEF and pleckstrin domain-containing protein 1, PH domain-containing family C member 2

Selected Validation Data



Immunohistochemical analysis of paraffin-embedded human kidney tissue slide using KHC3072 (FARP1 IHC Kit).



Immunohistochemical analysis of paraffin-embedded human placenta tissue slide using KHC3072 (FARP1 IHC Kit).