

# IHCeasy<sup>®</sup> ATP6V1H Ready-To-Use IHC Kit

Catalog Number: **KHC3027**

## General Information

Sample type:  
FFPE tissue  
Cited sample type:  
Reactivity:  
Human, Mouse, Rat  
Cited Reactivity:

Assay type:  
Immunohistochemistry  
Primary antibody type:  
Mouse Monoclonal  
Secondary antibody type:  
Polymer-HRP-Goat anti-Mouse

## Kit Component

Component	Size	Concentration
Antigen Retrieval Buffer	100 mL	50×
Washing Buffer	100 mL ×2	20×
Blocking Buffer	5 mL	RTU
Primary Antibody	5 mL	RTU
Secondary Antibody	5 mL	RTU
Chromogen Component A	0.2 mL	RTU
Chromogen Component B	4 mL	RTU
Signal Enhancer	5 mL	RTU
Counter Staining Reagent	5 mL	RTU
Mounting Media	5 mL	RTU
Control Slide	1 slide (Optional)	FFPE
Datasheet	1 Copy	
Manual	1 Copy	

## Storage Instructions

All the reagents are stored at 2-8°C. The kit is stable for 6 months from the date of receipt.

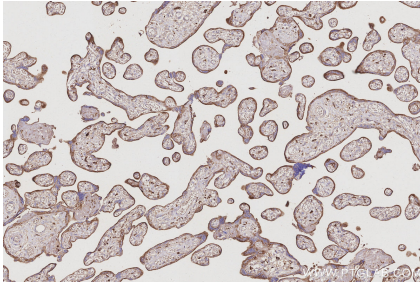
## Background

The vacuolar-type H(+)-ATPase (V-ATPase) is responsible for the acidification of endosomes, lysosomes, and other intracellular organelles. It is also involved in hydrogen ion transport across the plasma membrane into the extracellular space. The V-ATPase is a multisubunit complex with cytosolic and transmembrane domains.

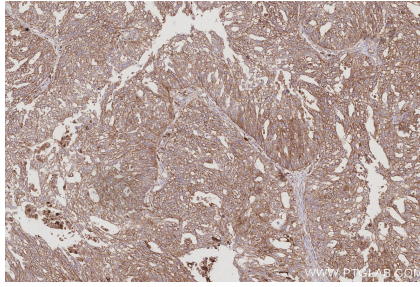
## Synonyms

CGI 11, CGI-11, MSTP042, NBP1, Nef binding protein 1

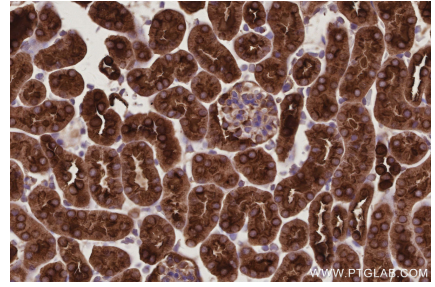
## Selected Validation Data



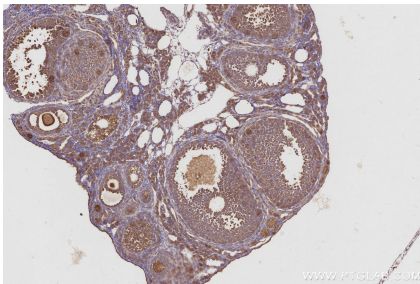
Immunohistochemical analysis of paraffin-embedded human placenta tissue slide using KHC3027 (ATP6V1H IHC Kit).



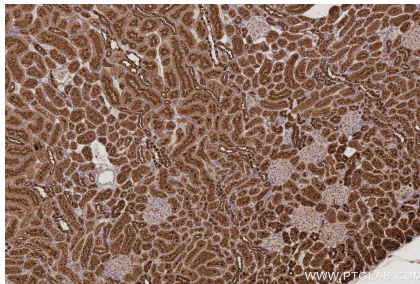
Immunohistochemical analysis of paraffin-embedded human ovary cancer tissue slide using KHC3027 (ATP6V1H IHC Kit).



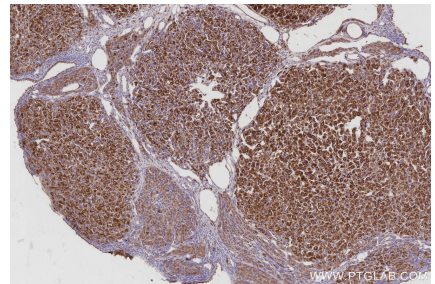
Immunohistochemical analysis of paraffin-embedded mouse kidney tissue slide using KHC3027 (ATP6V1H IHC Kit).



Immunohistochemical analysis of paraffin-embedded mouse ovary tissue slide using KHC3027 (ATP6V1H IHC Kit).



Immunohistochemical analysis of paraffin-embedded rat kidney tissue slide using KHC3027 (ATP6V1H IHC Kit).



Immunohistochemical analysis of paraffin-embedded rat ovary tissue slide using KHC3027 (ATP6V1H IHC Kit).