

# IHCeasy<sup>®</sup> Fetuin-B Ready-To-Use IHC Kit

Catalog Number: **KHC3025**

## General Information

Sample type:  
FFPE tissue  
Cited sample type:  
Reactivity:  
Human, Mouse, Rat  
Cited Reactivity:

Assay type:  
Immunohistochemistry  
Primary antibody type:  
Mouse Monoclonal  
Secondary antibody type:  
Polymer-HRP-Goat anti-Mouse

## Kit Component

Component	Size	Concentration
Antigen Retrieval Buffer	100 mL	50×
Washing Buffer	100 mL ×2	20×
Blocking Buffer	5 mL	RTU
Primary Antibody	5 mL	RTU
Secondary Antibody	5 mL	RTU
Chromogen Component A	0.2 mL	RTU
Chromogen Component B	4 mL	RTU
Signal Enhancer	5 mL	RTU
Counter Staining Reagent	5 mL	RTU
Mounting Media	5 mL	RTU
Control Slide	1 slide (Optional)	FFPE
Datasheet	1 Copy	
Manual	1 Copy	

## Storage Instructions

All the reagents are stored at 2-8°C. The kit is stable for 6 months from the date of receipt.

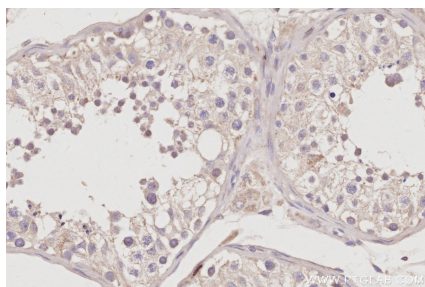
## Background

Fetuin A and B are both members of the cystatin superfamily. They are mainly expressed in the liver (hepatokines), as well as other tissues such as the kidneys, tongue, and placenta. Fetuin-B has been identified as a novel adipokine/hepatokine that significantly increases hepatic steatosis and mediates impaired insulin action and glucose intolerance.

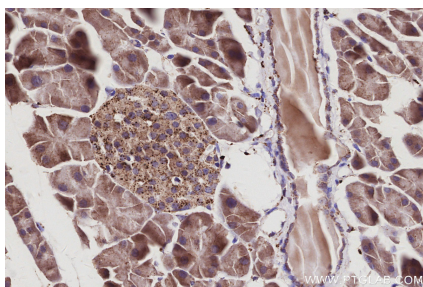
## Synonyms

FETUB, 16G2, fetuin B, FetuinB, Fetuin-like protein IRL685

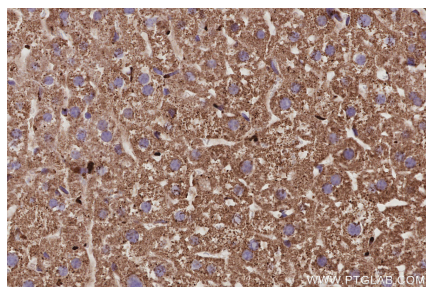
## Selected Validation Data



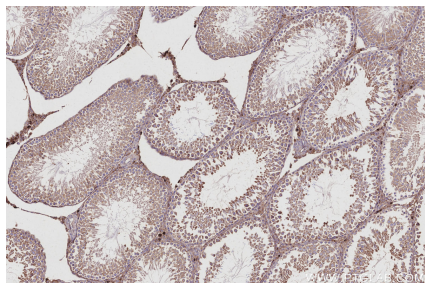
Immunohistochemical analysis of paraffin-embedded human testis tissue slide using KHC3025 (Fetuin-B IHC Kit).



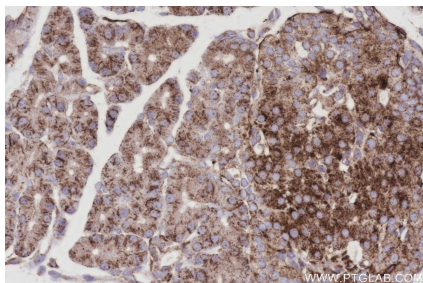
Immunohistochemical analysis of paraffin-embedded mouse pancreas tissue slide using KHC3025 (Fetuin-B IHC Kit).



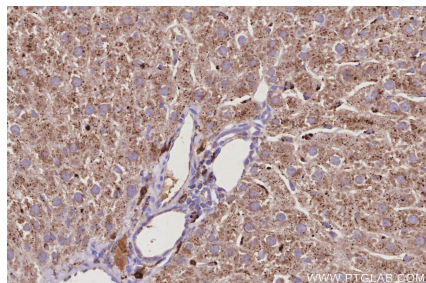
Immunohistochemical analysis of paraffin-embedded mouse liver tissue slide using KHC3025 (Fetuin-B IHC Kit).



Immunohistochemical analysis of paraffin-embedded rat testis tissue slide using KHC3025 (Fetuin-B IHC Kit).



Immunohistochemical analysis of paraffin-embedded rat pancreas tissue slide using KHC3025 (Fetuin-B IHC Kit).



Immunohistochemical analysis of paraffin-embedded rat liver tissue slide using KHC3025 (Fetuin-B IHC Kit).