

IHCeasy[®] AKAP11 Ready-To-Use IHC Kit

Catalog Number: **KHC3023**

General Information

Sample type:
FFPE tissue
Cited sample type:
Reactivity:
Human, Rat
Cited Reactivity:

Assay type:
Immunohistochemistry
Primary antibody type:
Rabbit Polyclonal
Secondary antibody type:
Polymer-HRP-Goat anti-Rabbit

Kit Component

Component	Size	Concentration
Antigen Retrieval Buffer	100 mL	50×
Washing Buffer	100 mL ×2	20×
Blocking Buffer	5 mL	RTU
Primary Antibody	5 mL	RTU
Secondary Antibody	5 mL	RTU
Chromogen Component A	0.2 mL	RTU
Chromogen Component B	4 mL	RTU
Signal Enhancer	5 mL	RTU
Counter Staining Reagent	5 mL	RTU
Mounting Media	5 mL	RTU
Control Slide	1 slide (Optional)	FFPE
Datasheet	1 Copy	
Manual	1 Copy	

Storage Instructions

All the reagents are stored at 2-8°C. The kit is stable for 6 months from the date of receipt.

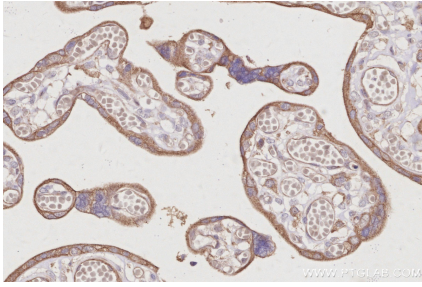
Background

AKAP11, also named as AKAP220, KIAA0629 and PRKA11, belongs to the AKAP110 family. AKAP11 binds to type II regulatory subunits of protein kinase A and anchors/targets them.

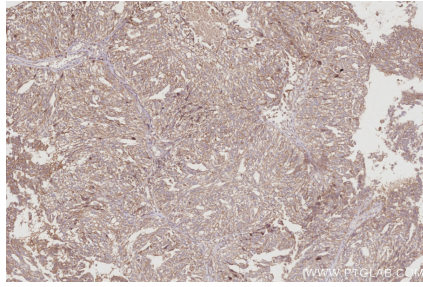
Synonyms

AKAP 11, AKAP 220, AKAP-11, AKAP220, A-kinase anchor protein 11

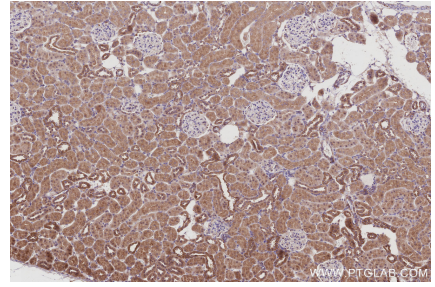
Selected Validation Data



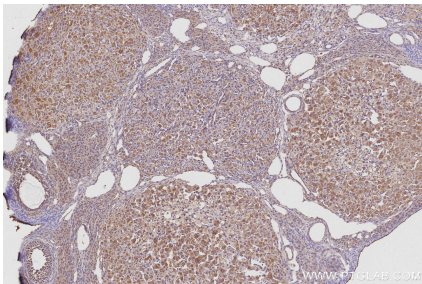
Immunohistochemical analysis of paraffin-embedded human placenta tissue slide using KHC3023 (AKAP11 IHC Kit).



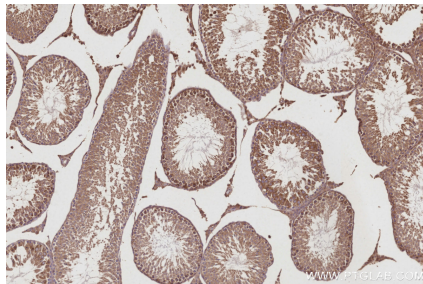
Immunohistochemical analysis of paraffin-embedded human ovary cancer tissue slide using KHC3023 (AKAP11 IHC Kit).



Immunohistochemical analysis of paraffin-embedded rat kidney tissue slide using KHC3023 (AKAP11 IHC Kit).



Immunohistochemical analysis of paraffin-embedded rat ovary tissue slide using KHC3023 (AKAP11 IHC Kit).



Immunohistochemical analysis of paraffin-embedded rat testis tissue slide using KHC3023 (AKAP11 IHC Kit).